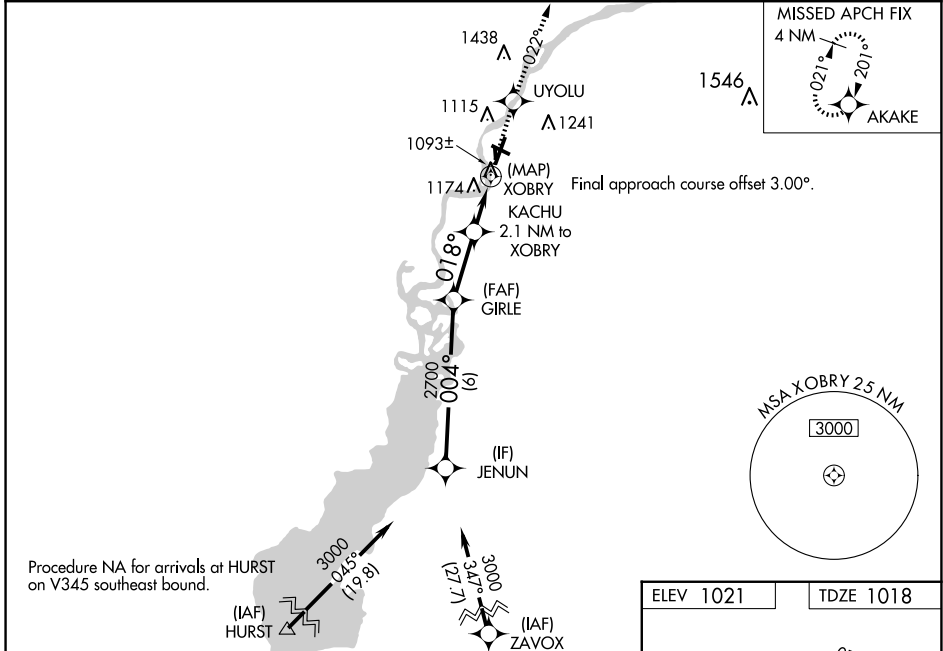


WAAS CH 77731 W02A	APP CRS 018°	Rwy Idg TDZE Apt Elev	5500 1018 1021
--	------------------------	-----------------------------	---

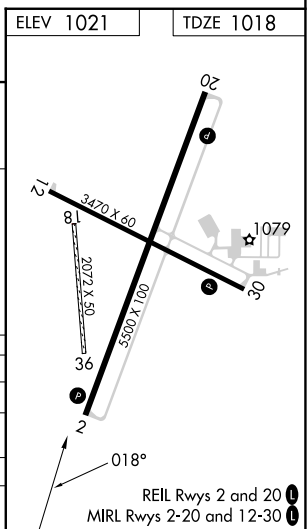
RNAV (GPS) RWY 2

ALEXANDER FLD SOUTH WOOD COUNTY (ISW)

RNP APCH - GPS.		UNICOM 122.8 (CTAF) 0	
<p>⚠ Circling NA to Rwys 18 and 36. Circling Rwy 20, 30 NA at night. Baro-VNAV and VDP NA when using Stevens Point altimeter setting. Rwy 2 helicopter visibility reduction below $\frac{3}{4}$ SM NA. For uncompensated Baro-VNAV systems, LNAV/VNAV NA below -17°C or above 54°C. When local altimeter setting not received, use Stevens Point altimeter setting; increase LPV DA to 1351 feet; increase LNAV/VNAV DA to 1546 feet and all visibilities $\frac{1}{8}$ SM; increase all MDAs 60 feet, LNAV Cat C and D visibilities $\frac{1}{8}$ SM and Circling Cat C and D visibilities $\frac{1}{4}$ SM.</p>		<p>MISSED APPROACH: Climb to 3000 direct UYOLU and on track 022° to AKAKE and hold.</p>	
ASOS 126.575	MINNEAPOLIS CENTER 124.4 317.7		



VGSi and RNAV glidepath not coincident (VGSi Angle 3.00/TCH 35).		3000	UYOLU	tr 022°	AKAKE
JENUN		↑	✧		✧
3000		GIRLE 2700		KACHU 2.1 NM to XOBRY	
GP 3.00° TCH 50		004°		0.7 NM to XOBRY	
2700		018°		XOBRY	
1880		6 NM		2.6 NM	
1.4		0.7		0.5	
CATEGORY	A	B	C	D	
LPV DA	1298-1		280 (300-1)		
LNAV/VNAV DA	1493-1 $\frac{3}{8}$		475 (500-1 $\frac{3}{8}$)		
LNAV MDA	1440-1	422 (500-1)	1440-1 $\frac{1}{4}$	422 (500-1 $\frac{1}{4}$)	
C CIRCLING	1480-1 459 (500-1)	1560-1 539 (600-1)	1620-1 $\frac{1}{2}$ 599 (600-1 $\frac{1}{2}$)	1800-2 $\frac{1}{2}$ 779 (800-2 $\frac{1}{2}$)	



EC-3, 23 JAN 2025 to 20 FEB 2025

EC-3, 23 JAN 2025 to 20 FEB 2025