

WAAS CH <b>63230</b> <b>W17A</b>	APP CRS <b>173°</b>	Rwy Idg TDZE Apt Elev	<b>5501</b> <b>592</b> <b>592</b>
--	------------------------	-----------------------------	---

# RNAV (GPS) RWY 17

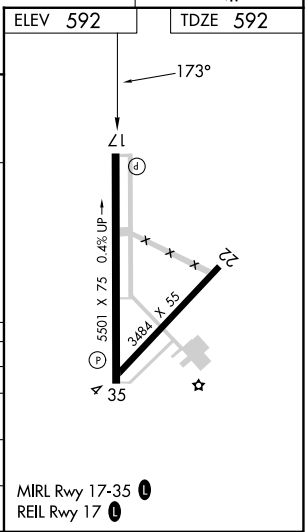
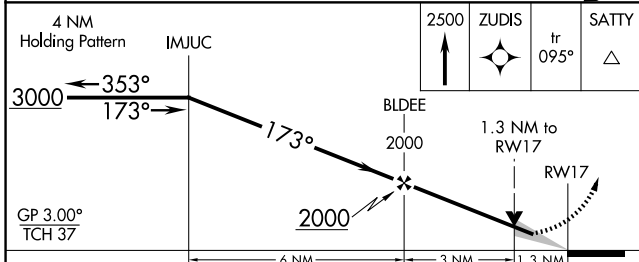
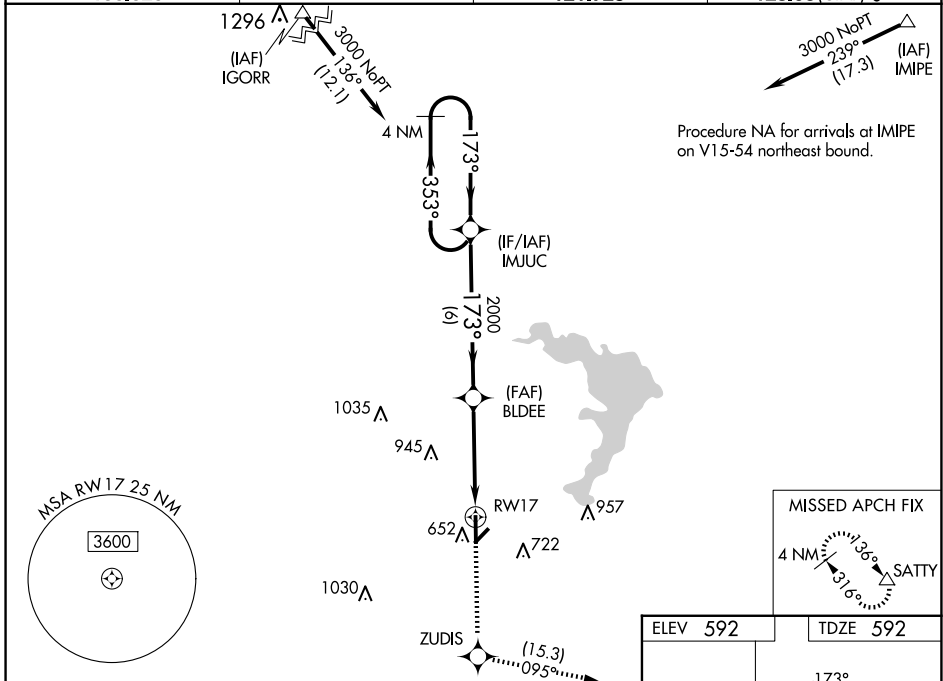
MC GREGOR EXEC (PWG)

RNP APCH - GPS.

**ASR** Baro-VNAV NA when using Waco Rgnl altimeter setting. For uncompensated Baro-VNAV systems, LNAV/VNAV NA below -20°C or above 54°C. When local altimeter setting not received, use Waco Rgnl altimeter setting and increase LPV DA to 873 feet and all visibilities 1/8 SM; increase LNAV/VNAV DA to 873 feet and all visibilities 1/8 SM; increase all MDAs 40 feet and Circling visibility Cat C 1/4 SM.

MISSED APPROACH:  
Climb to 2500 direct ZUDIS and on track 095° to SATTY and hold.

AWOS-3PT <b>135.525</b>	WACO APP CON ★ <b>127.65 352.0</b>	GCO <b>121.725</b>	UNICOM <b>123.05</b> (CTAF) <b>0</b>
----------------------------	---------------------------------------	-----------------------	---



CATEGORY	A	B	C	D
LPV DA	842-3/4	250 (300-3/4)		NA
LNAV/VNAV DA	842-3/4	250 (300-3/4)		NA
LNAV MDA	1040-1	448 (500-1)	1040-1 3/8 448 (500-1 3/8)	NA
CIRCLING	1040-1 448 (500-1)	1060-1 468 (500-1)	1300-2 708 (800-2)	NA

SC-3, 23 JAN 2025 to 20 FEB 2025

SC-3, 23 JAN 2025 to 20 FEB 2025