

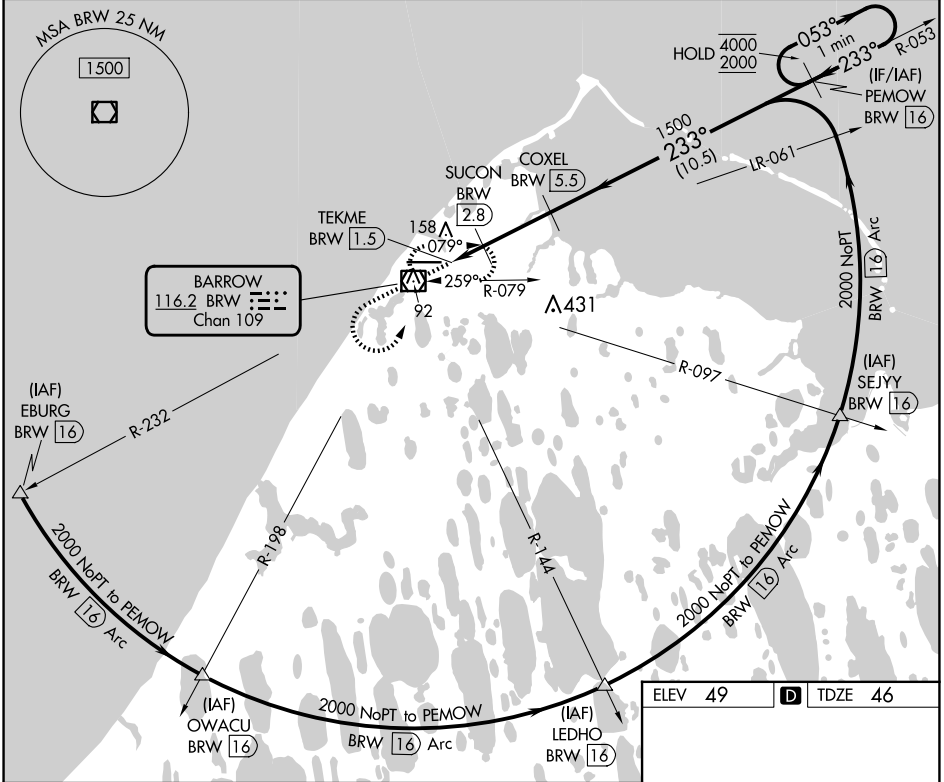
VOR/DME BRW <b>116.2</b> Chan <b>109</b>	APP CRS <b>233°</b>	Rwy Idg TDZE Apt Elev	<b>5900</b> <b>46</b> <b>49</b>
--	------------------------	-----------------------------	---------------------------------------

# VOR RWY 26

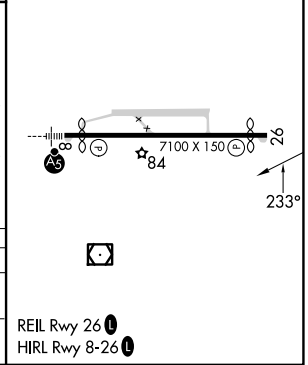
WILEY POST-WILL ROGERS MEML (BRW)(PABR)

DME required.	MISSED APPROACH: Climb to 1600 then climbing left turn to 2000 direct BRW VOR/DME and hold, continue climb-in-hold to 2000.
Circling NA for Cat A north of Rwy 8-26.	

AFIS <b>132.15</b>	ANCHORAGE CENTER <b>135.3 239.25</b>	BARROW RADIO <b>123.6 (CTAF) 0</b>
-----------------------	---	---------------------------------------



ELEV 49	TDZE 46			
1600	2000	BRW		
TEKME BRW [1.5]	SUCON BRW [2.8]	COXEL BRW [5.5]	PEMOW BRW [16]	
540	1500	4000	2000	
0.4	0.6	0.7	2.7 NM	
10.5 NM				
CATEGORY	A	B	C	D
S-26	420-1 374 (400-1)			
CIRCLING	420-1 371 (400-1)	500-1 451 (500-1)	500-1½ 451 (500-1½)	680-2 631 (700-2)



# VOR RWY 26

AK, 26 DEC 2024 to 20 FEB 2025

AK, 26 DEC 2024 to 20 FEB 2025