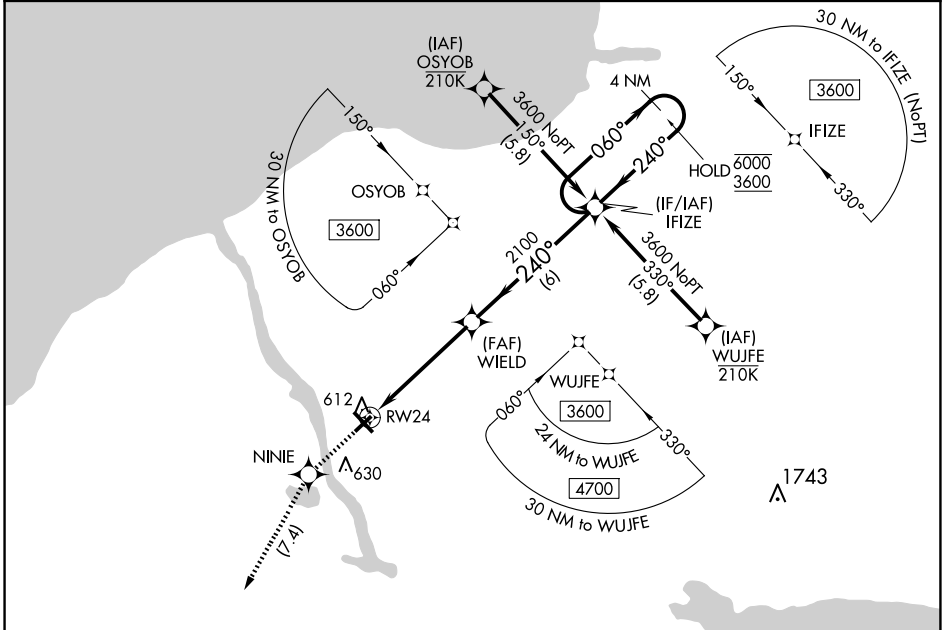


APP CRS 240°	Rwy Idg TDZE Apt Elev	3997 469 475
------------------------	-----------------------------	---

RNAV (GPS) RWY 24

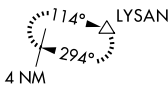
OSWEGO COUNTY (FZY)

RNP APCH - GPS.		MISSED APPROACH: Climb to 3000 direct NINIE and left turn direct LYSAN and hold, continue climb-in-hold to 3000.
Rwy 24 helicopter visibility reduction below 1 SM NA.		
ASOS 119.275	SYRACUSE APP CON 126.125 269.125	UNICOM 123.0 (CTAF) 0



NE-2, 23 JAN 2025 to 20 FEB 2025

NE-2, 23 JAN 2025 to 20 FEB 2025



ELEV 475	TDZE 469
----------	----------

RWY 24 diagram: 5126 x 100, 0.5% UP, 0.3% UP, 3997 x 100.

3000	NINIE	LYSAN
------	-------	-------

IFIZE 4 NM Holding Pattern

WIELD

RWY 24

2100

060° → 6000

← 240° 3600

3.00° TCH 40

5 NM

6 NM

CATEGORY	A	B	C	D
LNVA MDA	960-1	491 (500-1)	960-1 $\frac{3}{8}$	491 (500-1 $\frac{3}{8}$)
CIRCLING	960-1	485 (500-1)	960-1 $\frac{1}{2}$	1040-2
			485 (500-1 $\frac{1}{2}$)	565 (600-2)

MIRL Rwy 6-24 0

HIRL Rwy 15-33 0

REIL Rwy 15 and 33 0

REIL Rwy 6 and 24