

(WHAEL.PIEGY1) 24305

AL-5573 (FAA)

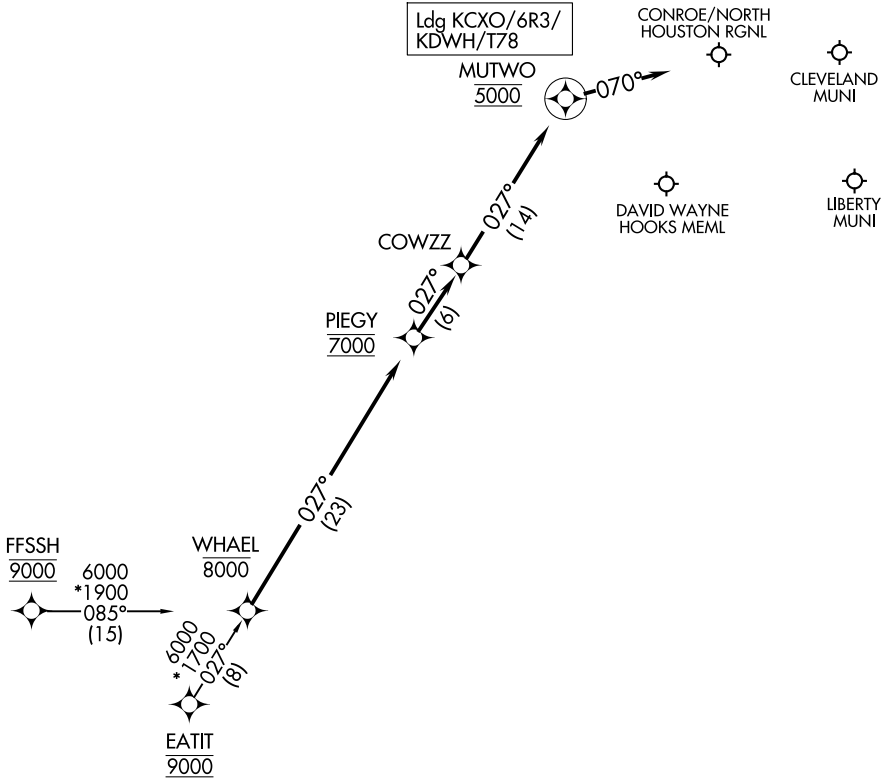
PIEGY ONE ARRIVAL (RNAV)

HOUSTON, TEXAS

HOUSTON APP CON
119.7 281.4
CXO ATIS
118.325
DWH ATIS
128.375

RNAV 1 - DME/DME/IRU or GPS.

RADAR required.



NOTE: Chart not to scale.

ARRIVAL ROUTE DESCRIPTION

EATIT TRANSITION (EATIT.PIEGY1)
FFSSH TRANSITION (FFSSH.PIEGY1)

LANDING ALL AIRPORTS: From WHAEL on track 027° to cross PIEGY at 7000, then on track 027° to COWZZ, then on track 027° to cross MUTWO at 5000, then on track 070°. Expect RADAR vectors to final approach course.

PIEGY ONE ARRIVAL (RNAV)

HOUSTON, TEXAS

(WHAEL.PIEGY1) 29DEC22

SC-5, 23 JAN 2025 to 20 FEB 2025

SC-5, 23 JAN 2025 to 20 FEB 2025