

WAAS CH <b>62819</b> <b>W32A</b>	APP CRS <b>321°</b>	Rwy Idg TDZE Apt Elev	<b>7501</b> <b>245</b> <b>245</b>
--	------------------------	-----------------------------	---

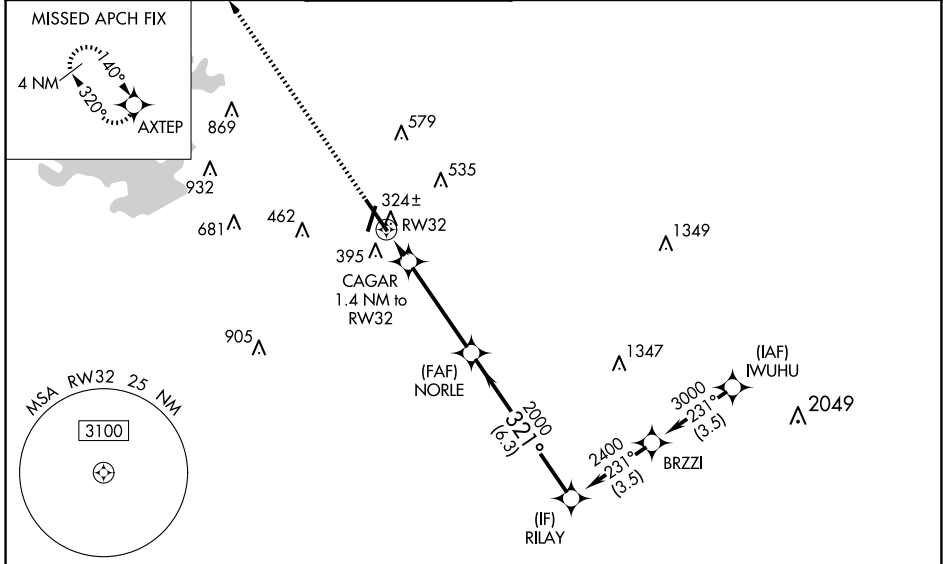
# RNAV (GPS) RWY 32

CONROE/NORTH HOUSTON RGNL (CXXO)

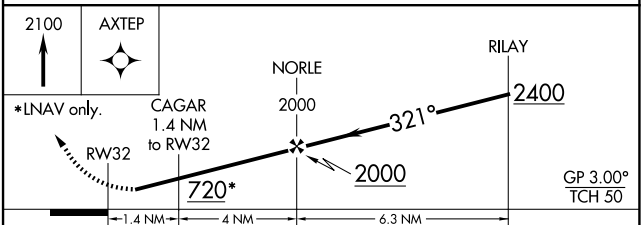
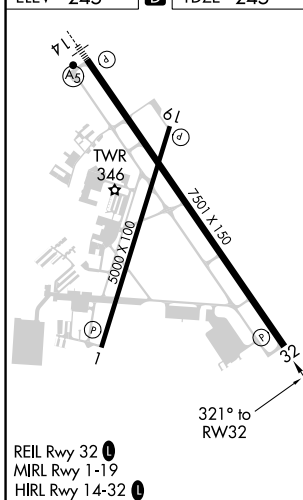
**⚠** For uncompensated Baro-VNAV systems, LNAV/VNAV NA below -6°C (-22°F) or above 54°C (130°F). DME/DME RNP-0,3 NA.  
**⚠** Rwy 32 helicopter visibility reduction below ¾ SM NA.

MISSED APPROACH: Climb to 2100 direct AXTEP and hold.

ATIS <b>118.325</b>	HOUSTON APP CON <b>119.7 281.4</b>	CONROE TOWER * <b>124.125 (CTAF) 0</b>	GND CON <b>120.45</b>	CLNC DEL <b>120.45</b>	CLNC DEL <b>119.55</b> (When twr closed)
------------------------	---------------------------------------	---	--------------------------	---------------------------	--



ELEV <b>245</b>	<b>D</b>	TDZE <b>245</b>
-----------------	----------	-----------------



CATEGORY	A	B	C	D
LPV DA		495-¾	250 (300-¾)	
LNAV/VNAV DA		505-⅞	260 (300-⅞)	
LNAV MDA		580-1	335 (400-1)	
<b>C</b> CIRCLING	700-1	455 (500-1)	880-1¾ 635 (700-1¾)	960-2¼ 715 (800-2¼)

SC-5, 23 JAN 2025 to 20 FEB 2025

SC-5, 23 JAN 2025 to 20 FEB 2025