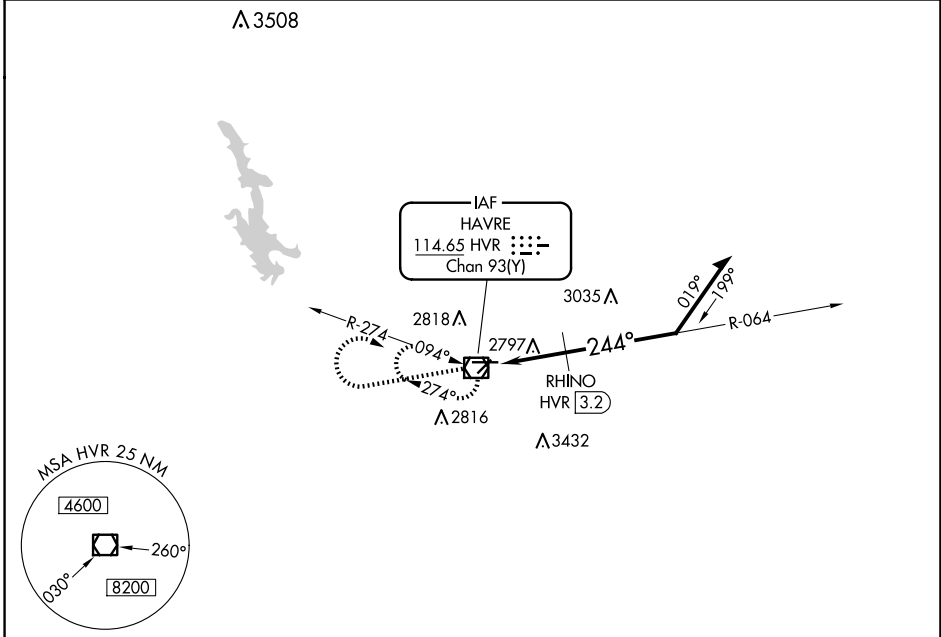


VOR/DME HVR <b>114.65</b> Chan <b>93(Y)</b>	APP CRS <b>244°</b>	Rwy Idg TDZE Apt Elev	<b>5205</b> <b>2586</b> <b>2591</b>
---	------------------------	-----------------------------	---

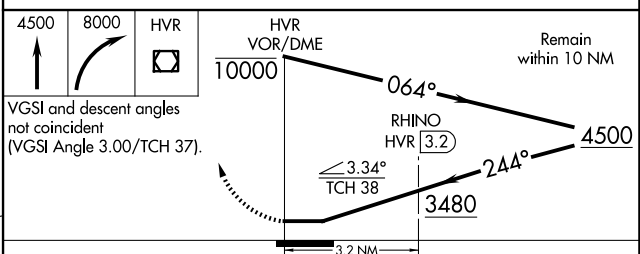
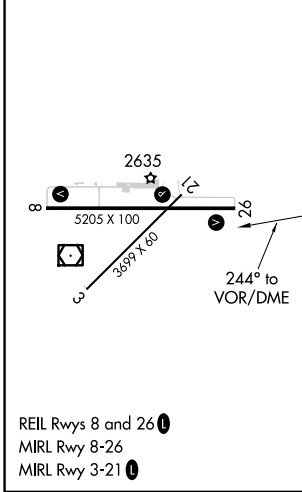
**VOR RWY 26**  
HAVRE CITY-COUNTY (HVR)

MISSED APPROACH: Climb to 4500 then climbing right turn to 8000 direct HVR VOR/DME and hold, continue climb-in-hold to 8000.

ASOS <b>135.225</b>	SALT LAKE CENTER <b>133.4 285.4</b>	UNICOM <b>122.8 (CTAF)</b>
------------------------	--	-------------------------------



ELEV 2591	<b>D</b>	TDZE 2586
-----------	----------	-----------



CATEGORY	A	B	C	D
S-26	3480-1¼	894 (900-1¼)	3480-2¾ 894 (900-2¾)	3480-3 894 (900-3)
CIRCLING	3480-1¼	889 (900-1¼)	3480-2¾ 889 (900-2¾)	3740-3 1149 (1200-3)
RHINO FIX MINIMUMS				
S-26	3060-1	474 (500-1)	3060-1¼ 474 (500-1¼)	3060-1½ 474 (500-1½)
CIRCLING	3080-1 489 (500-1)	3120-1 529 (600-1)	3360-2¼ 769 (800-2¼)	3740-3 1149 (1200-3)

NW-1, 23 JAN 2025 to 20 FEB 2025

NW-1, 23 JAN 2025 to 20 FEB 2025