

WAAS CH 81906 W16A	APP CRS 166°	Rwy Idg TDZE Apt Elev	5201 3432 3459
--	------------------------	-----------------------------	---

RNAV (GPS) Z RWY 16

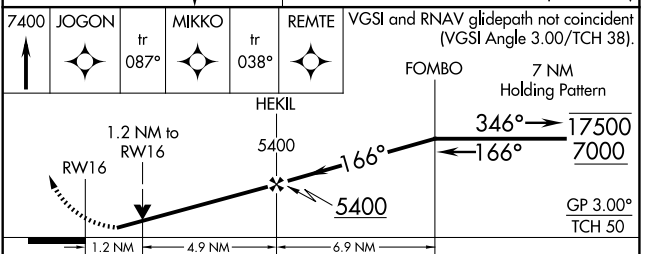
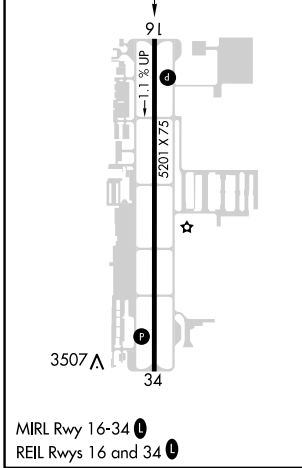
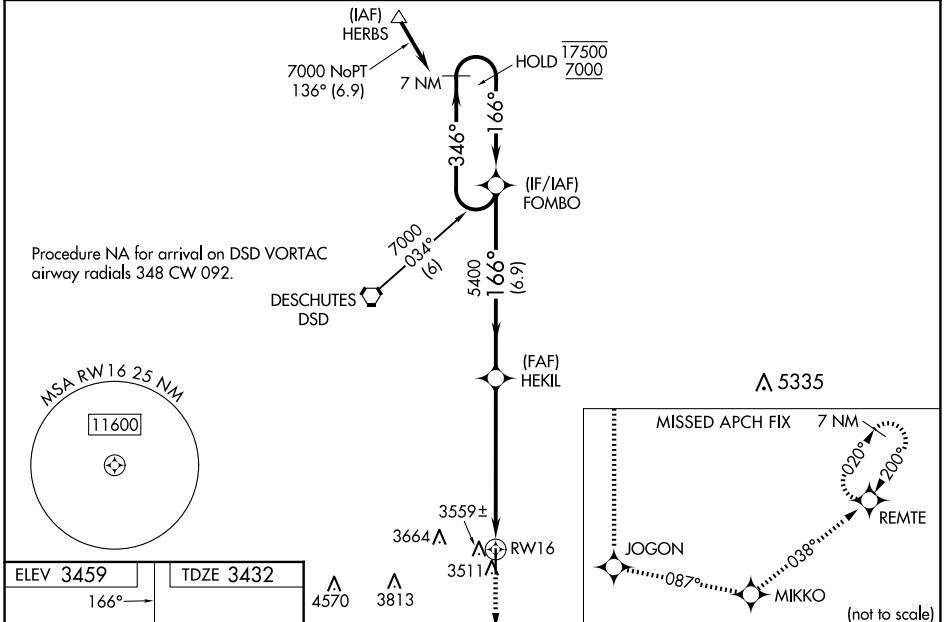
BEND MUNI (BDN)

RNP APCH - GPS.

⚠ Baro-VNAV and VDP NA when using Redmond altimeter setting. Rwy 16 helicopter visibility reduction below $\frac{3}{4}$ SM NA. For uncompensated Baro-VNAV systems, LNAV/VNAV NA below -21°C or above 54°C. When local altimeter setting not received, use Redmond altimeter setting: increase LPV DA to 3763 feet and all visibilities $\frac{1}{4}$ SM; increase LNAV/VNAV DA to 3821 feet and all visibilities $\frac{1}{4}$ SM; increase all MDAs 100 feet and LNAV visibility Cats C and D $\frac{1}{4}$ SM, and Circling visibility Cat C $\frac{1}{2}$ SM.

MISSED APPROACH: Climb to 7400 direct JOGON and on track 087° to MIKKO and on track 038° to REMTE and hold, continue climb-in-hold to 7400.

AWOS-3 134.425	SEATTLE CENTER 126.15 269.475	UNICOM 123.0 (CTAF)
--------------------------	---	-------------------------------



CATEGORY	A	B	C	D
LPV DA		3682- $\frac{3}{4}$	250 (300- $\frac{3}{4}$)	
LNAV/VNAV DA		3740- $\frac{7}{8}$	308 (300- $\frac{7}{8}$)	
LNAV MDA	3820-1	388 (400-1)	3820-1 $\frac{1}{8}$	388 (400-1 $\frac{1}{8}$)
C CIRCLING	3960-1 501 (600-1)	3980-1 521 (600-1)	4120-1 $\frac{3}{4}$ 661 (700-1 $\frac{3}{4}$)	4640-3 1181 (1200-3)

NW-1, 23 JAN 2025 to 20 FEB 2025

NW-1, 23 JAN 2025 to 20 FEB 2025