

VOR/DME COU 110.2 Chan 39	APP CRS 153°	Rwy Idg 5500 TDZE 888 Apt Elev 889
---	------------------------	---

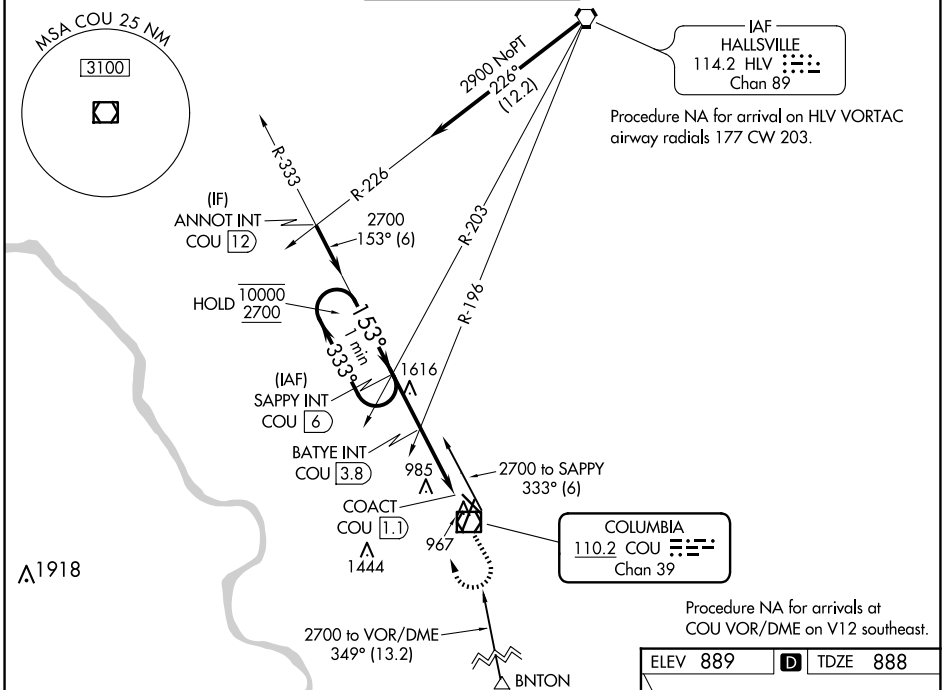
VOR RWY 13

COLUMBIA RGNL (COU)

⚠ Circling NA for Cat D west of Rwy 2 and 13.
⚠ Circling Rwy 20 NA at night.

MISSED APPROACH: Climb to 1900 then dimbing right turn to 2700 on COU VOR/DME R-333 to SAPPY INT/COU 6 DME and hold.

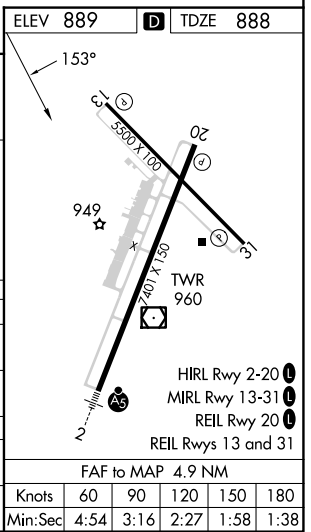
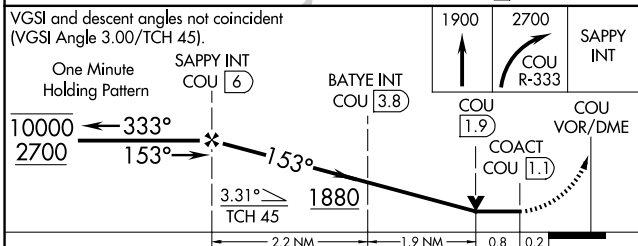
ATIS 128.45	MIZU APP CON 124.375 353.925	COLUMBIA TOWER * 119.3 (CTAF) 363.25	GND CON 121.6	UNICOM 122.95
-----------------------	--	---	-------------------------	-------------------------



Procedure NA for arrival on HLV VORTAC airway radials 177 CW 203.

COLUMBIA
110.2 COU
Chan 39

Procedure NA for arrivals at COU VOR/DME on V12 southeast.



CATEGORY	A	B	C	D
S-13	1880-1¼ 991 (1000-1¼)	1880-1½ 991 (1000-1½)	1880-3	991 (1000-3)
C CIRCLING	1880-1¼ 991 (1000-1¼)	1880-1½ 991 (1000-1½)	1880-3	991 (1000-3)
BATYE FIX MINIMUMS				
S-13	1240-1 351 (400-1)			
C CIRCLING	1300-1 411 (500-1)	1340-1 451 (500-1)	1360-1½ 471 (500-1½)	1440-2 551 (600-2)

ELEV 889	D TDZE 888
153°	
333°	
2700	
1880	
1900	
2700	
SAPPY INT	
COU R-333	
COU 1.9	
COU 1.1	
COU VOR/DME	
949	
7401 X 130	
TWR 960	
HIRL Rwy 2-20	
MIRL Rwy 13-31	
REIL Rwy 20	
REIL Rws 13 and 31	
FAF to MAP 4.9 NM	
Knots	60 90 120 150 180
Min:Sec	4:54 3:16 2:27 1:58 1:38

NC-3, 23 JAN 2025 to 20 FEB 2025

NC-3, 23 JAN 2025 to 20 FEB 2025