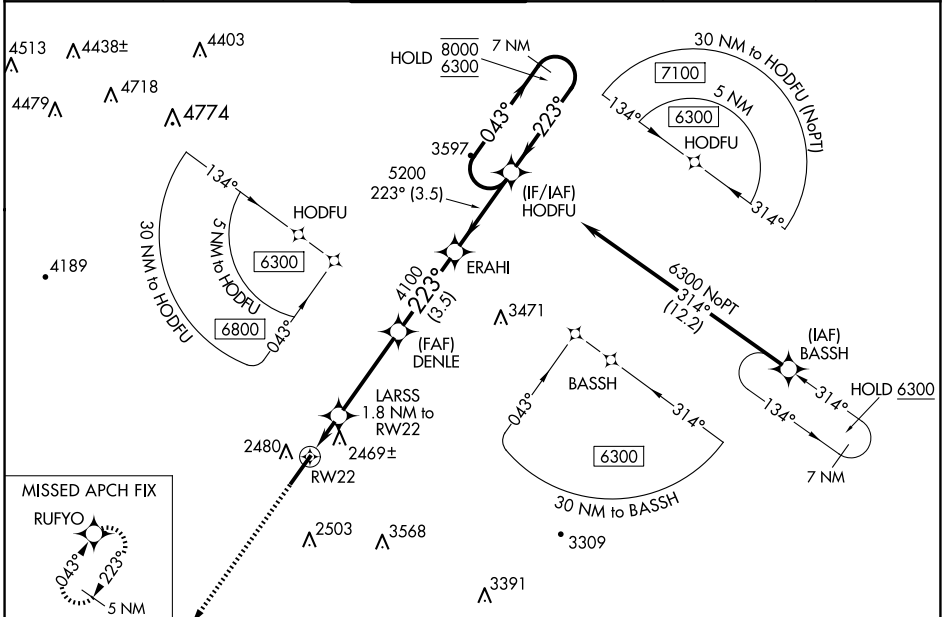


WAAS CH <b>99441</b> <b>W22A</b>	APP CRS <b>223°</b>	Rwy Idg TDZE Apt Elev	<b>7003</b> <b>2302</b> <b>2302</b>
--	------------------------	-----------------------------	---

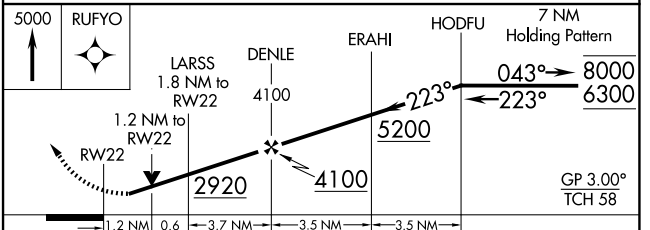
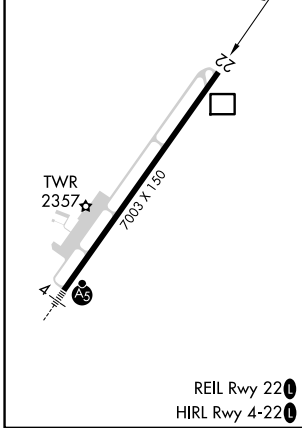
# RNAV (GPS) RWY 22

GREENBRIER VALLEY (LWB)

RNP APCH - GPS.		MISSED APPROACH: Climb to 5000 direct RUFYO and hold.					
<p><b>V</b> Rwy 22 helicopter visibility reduction below 3/4 SM NA.  <b>A</b> For uncompensated Baro-VNAV systems, LNAV/VNAV NA below -19°C or above 54°C.</p>		ATIS*	WASHINGTON CENTER	LEWISBURG TOWER*	GND CON	CLNC DEL	UNICOM
		<b>121.4</b>	<b>134.4 353.9</b>	<b>118.9 (CTAF) 0</b>	<b>121.9</b>	<b>125.725</b> (When twr closed)	<b>122.95</b>



ELEV 2302	<b>D</b>	TDZE 2302
-----------	----------	-----------



CATEGORY	A	B	C	D
LPV DA		2614-7/8	312 (400-7/8)	
LNAV/VNAV DA		2723-1/4	421 (500-1/4)	
LNAV MDA	2720-1	418 (500-1)	2720-1/8	418 (500-1/8)
<b>C</b> CIRCLING	2840-1 538 (600-1)	3040-1 738 (800-1)	3280-3 978 (1000-3)	3700-3 1398 (1400-3)

NE-4, 23 JAN 2025 to 20 FEB 2025

NE-4, 23 JAN 2025 to 20 FEB 2025