


LOC I-HWV <b>108.95</b>	APP CRS <b>059°</b>	Rwy Idg TDZE Apt Elev	<b>4201</b> <b>77</b> <b>81</b>
----------------------------	------------------------	-----------------------------	---------------------------------------


# ILS or LOC RWY 6

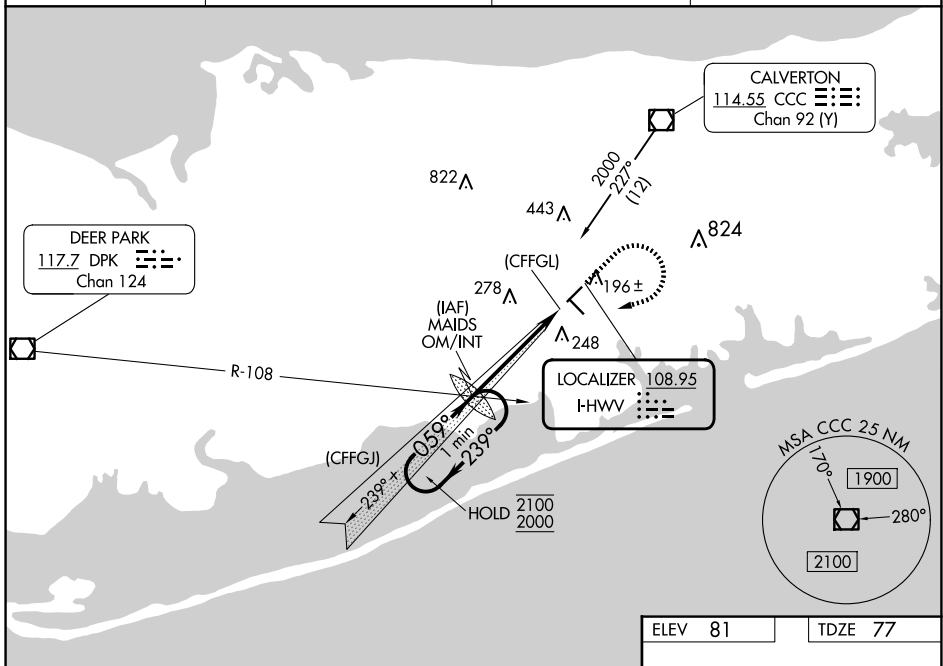
BROOKHAVEN (HWV)

**⚠** Rwy 6 helicopter visibility reduction below 1 SM NA. When local altimeter setting not received, use ISP altimeter setting and increase S-ILS 6 DA to 367; increase all MDAs 40 feet. For inop ALS, increase S-ILS 6 all Cats visibility to 7/8 SM and increase S-LOC 6 all Cats visibility to 1 SM. ILS localizer unusable 0.5 NM to threshold. Circling Rwy 6, 1.5 NA at night.

**MALSR**  


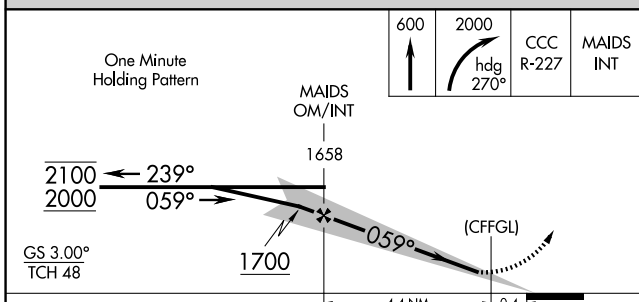
**MISSED APPROACH:** Climb to 600 then climbing right turn to 2000 on heading 270° and CCC VOR/DME R-227 to MAIDS OM/INT and hold, continue climb-in-hold to 2000.

ASOS <b>119.625</b>	NEW YORK APP CON <b>120.05 343.75</b>	CLNC DEL <b>133.2</b>	UNICOM <b>122.8 (CTAF)</b> 
------------------------	--	--------------------------	---




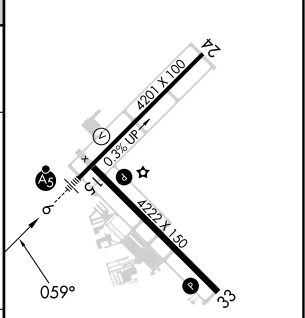
NE-2, 23 JAN 2025 to 20 FEB 2025



NE-2, 23 JAN 2025 to 20 FEB 2025



ELEV 81	TDZE 77
---------	---------

CATEGORY	A	B	C	D
S-ILS 6	339-3/4	262 (300-3/4)		NA
S-LOC 6	540-3/4	463 (500-3/4)		NA
 CIRCLING	560-1	479 (500-1)		NA



REIL Rwy 15, 24 and 33   
 MIRL Rwy 6-24 and 15-33 

FAF to MAP 4.4 NM

Knots	60	90	120	150	180
Min:Sec	4:24	2:56	2:12	1:46	1:28