

WAAS CH 40331 W27A	APP CRS 269°	Rwy Idg TDZE Apt Elev	5100 686 706
--	------------------------	-----------------------------	---

RNAV (GPS) RWY 27

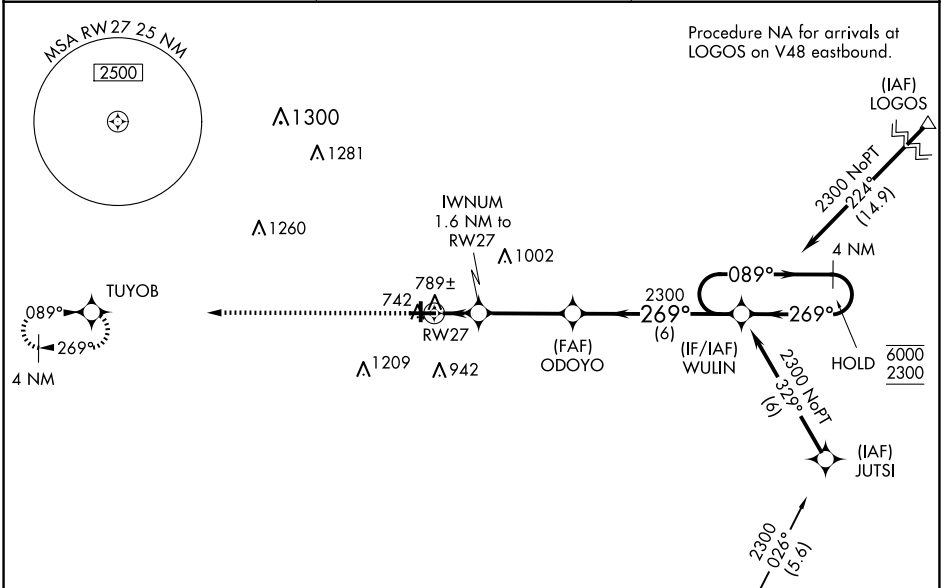
MACOMB MUNI (MQB)

RNP APCH - GPS.

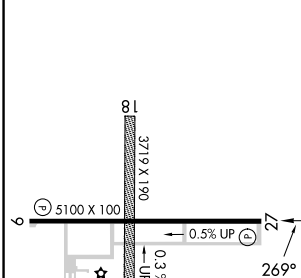
- Baro-VNAV and VDP NA when using Burlington altimeter setting. Circling NA to Rwy 18 and 36.
- For uncompensated Baro-VNAV systems, LNAV/VNAV NA below -16°C or above 54°C. When local altimeter setting not received, use Burlington altimeter setting and increase LPV DA to 949 feet; increase LNAV/VNAV DA to 1040 feet; increase all MDAs 80 feet and visibility Cat C/D ¼ SM.

MISSED APPROACH:
Climb to 2300 direct TUYOB and hold.

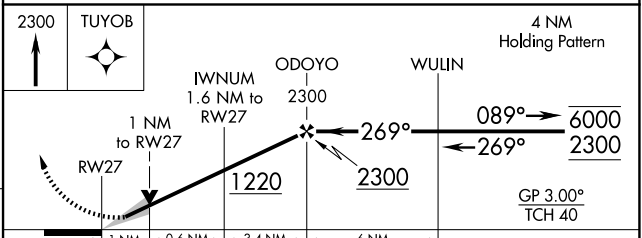
AWOS-3 119.025	CHICAGO CENTER 135.6 316.1	UNICOM 122.8 (CTAF) 0
--------------------------	--------------------------------------	---------------------------------



ELEV 706	TDZE 686
-----------------	-----------------



Procedure NA for arrivals at BADER on V67 southeast bound.



CATEGORY	A	B	C	D
LPV DA		886-1	200 (200-1)	
LNAV/VNAV DA		977-1	291 (300-1)	
LNAV MDA		1040-1	354 (400-1)	
CIRCLING	1120-1 414 (500-1)	1260-1 554 (600-1)	1520-2½ 814 (900-2½)	1520-2¾ 814 (900-2¾)

REIL Rwy 9 and 27
HIRL Rwy 9-27

EC-3, 23 JAN 2025 to 20 FEB 2025

EC-3, 23 JAN 2025 to 20 FEB 2025