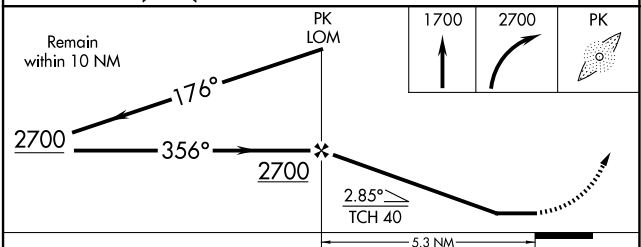
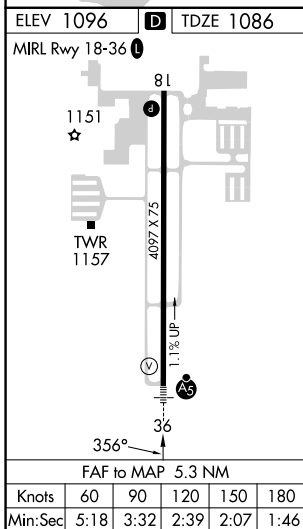
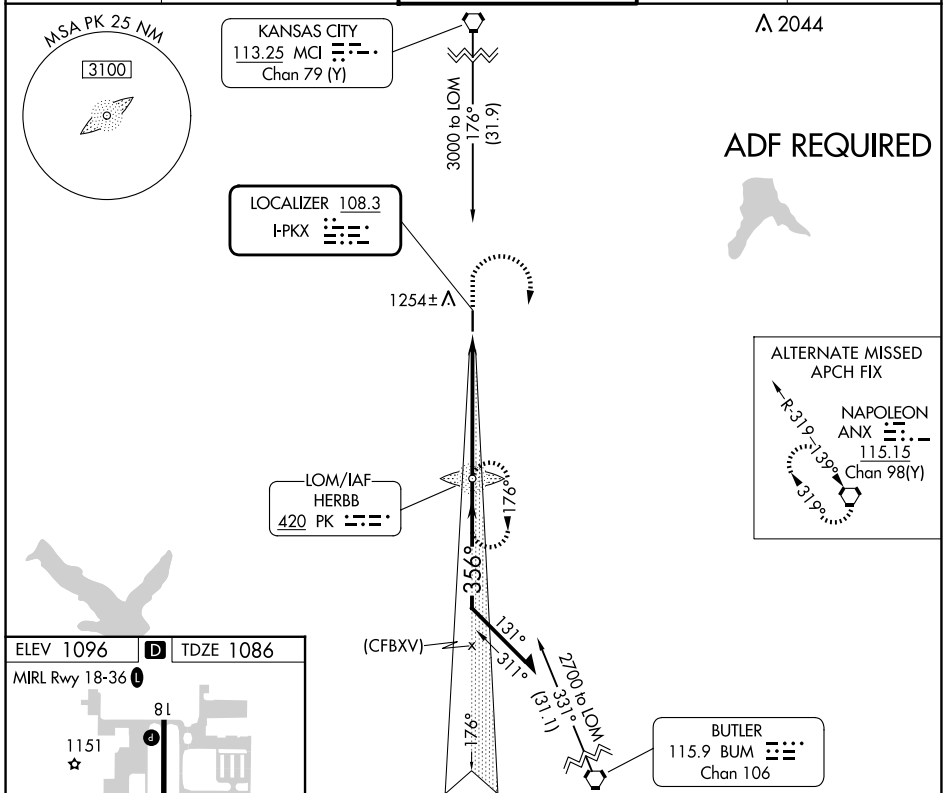


LOC I- PKX 108.3	APP CRS 356°	Rwy ldg 4097 TDZE 1086 Apt Elev 1096
-----------------------------------	------------------------	--

LOC RWY 36
JOHNSON COUNTY EXEC (OJC)

NA	Helicopter visibility reduction below 3/4 SM not authorized. For inoperative MALSRS, increase S-36 Cats A and B visibility 1/4 mile.	MALSRS A5	MISSED APPROACH: Climb to 1700 then climbing right turn to 2700 direct HERBB LOM and hold.
-----------	--	---------------------	--

ATIS 119.35	KANSAS CITY APP CON 118.9 251.075	EXECUTIVE TOWER* 126.0 (CTAF) 225.4	GND CON 121.6	UNICOM 122.95
-----------------------	---	---	-------------------------	-------------------------



CATEGORY	A	B	C	D
S-36	1580-3/4	494 (500-3/4)	1580-1 494 (500-1)	NA
C CIRCLING	1620-1	524 (600-1)	1620-1 1/2 524 (600-1 1/2)	NA

NC-2, 23 JAN 2025 to 20 FEB 2025

NC-2, 23 JAN 2025 to 20 FEB 2025