

WAAS CH 77827 W24A	APP CRS 241°	Rwy Idg TDZE Apt Elev 5500 2087 2087
--	------------------------	--

RNAV (GPS) RWY 24

VIRGINIA HIGHLANDS (VJI)

RNP APCH - GPS

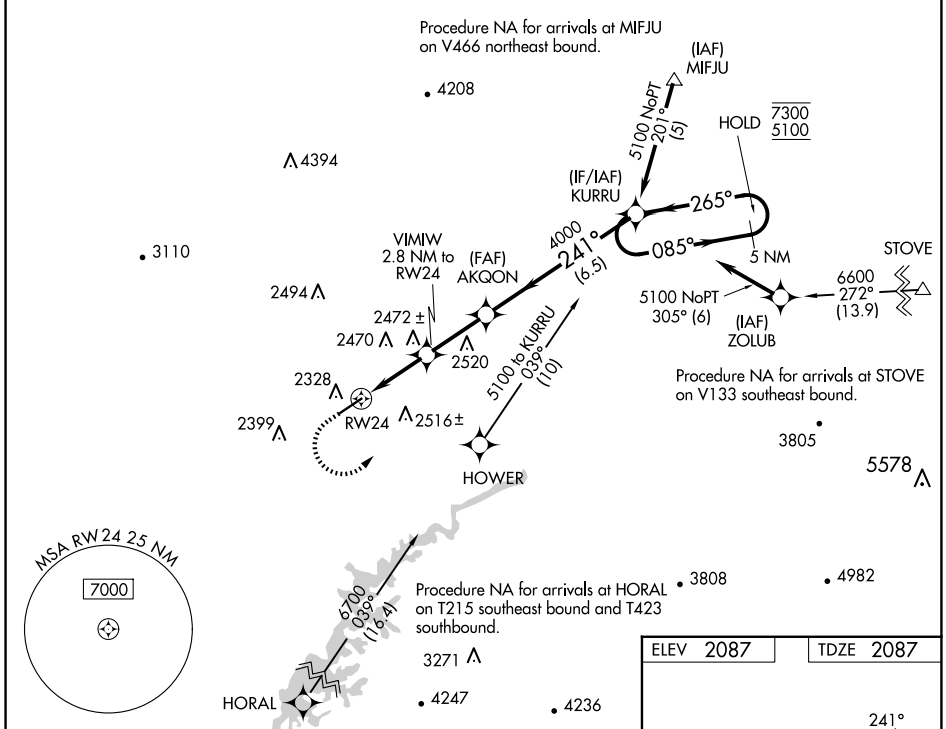
▽ For uncompensated Baro-VNAV systems, LNAV/VNAV NA below -19°C or above 54°C. Rwy 24 helicopter visibility reduction below ¾ SM NA. Inop table does not apply to LPV. For inop ALS, reduce LNAV/VNAV Cat A/B visibility to 1¼ SM.

ODALS



MISSED APPROACH: Climb to 2900 then climbing left turn to 7300 direct KURRU and hold, continue climb-in-hold.

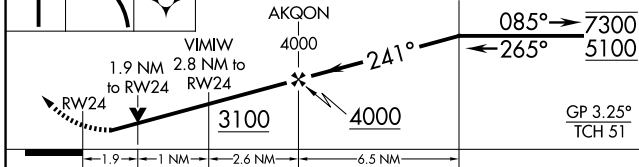
AWOS-3 128.125	TRI CITY APP CON ★ 125.25 349.0	UNICOM 122.8 (CTAF) 0
--------------------------	---	---------------------------------



NE-3, 23 JAN 2025 to 20 FEB 2025

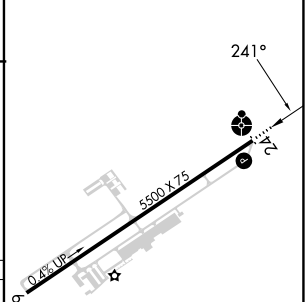
NE-3, 23 JAN 2025 to 20 FEB 2025

2900	7300	KURRU	VGSI and RNAV glidepath not coincident (VGSI Angle 3.25/TCH 23).	5 NM Holding Pattern
------	------	-------	--	----------------------



CATEGORY	A	B	C	D
LPV DA		2451-1	364 (400-1)	
LNAV/VNAV DA		2682-1½	595 (600-1½)	
LNAV MDA	2760-¾	673 (700-¾)	2760-1¾	673 (700-1¾)
C CIRCLING	2860-1	773 (800-1)	2860-2¼	3080-3
			773 (800-2¼)	993 (1000-3)

ELEV 2087	TDZE 2087
-----------	-----------



MIRL Rwy 6-24 0
REIL Rwy 6 and 24 0