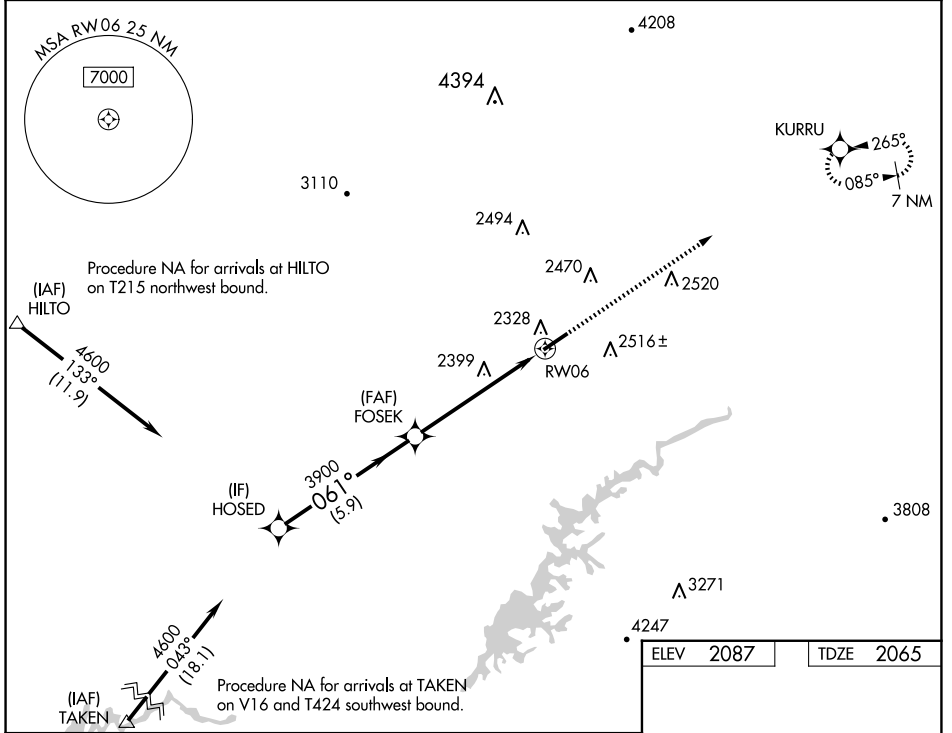


WAAS CH 82411 W06A	APP CRS 061°	Rwy Idg TDZE Apt Elev	5500 2065 2087
----------------------------------------	------------------------	-----------------------------	-------------------------------------------

RNAV (GPS) RWY 6

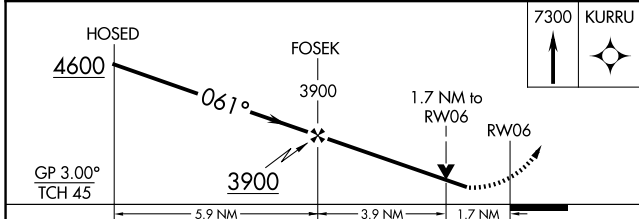
VIRGINIA HIGHLANDS (VJI)

RNP APCH - GPS.		MISSED APPROACH: Climb to 7300 direct KURRU and hold, continue climb-in-hold to 7300.
<p>⚠ Rwy 6 helicopter visibility reduction below 3/4 SM NA. For uncompensated Baro-VNAV systems, LNAV/VNAV NA below -19°C or above 54°C.</p>		
AWOS-3 128.125	TRI CITY APP CON * 125.25 349.0	UNICOM 122.8 (CTAF) 0



NE-3, 23 JAN 2025 to 20 FEB 2025

NE-3, 23 JAN 2025 to 20 FEB 2025



CATEGORY	A	B	C	D
LPV DA		2456-1 1/8	391 (400-1 1/8)	
LNAV/VNAV DA		2528-1 3/8	463 (500-1 3/8)	
LNAV MDA	2660-1	595 (600-1)	2660-1 3/4	595 (600-1 3/4)
C CIRCLING	2860-1	773 (800-1)	2860-2 1/4 773 (800-2 1/4)	3080-3 993 (1000-3)

