

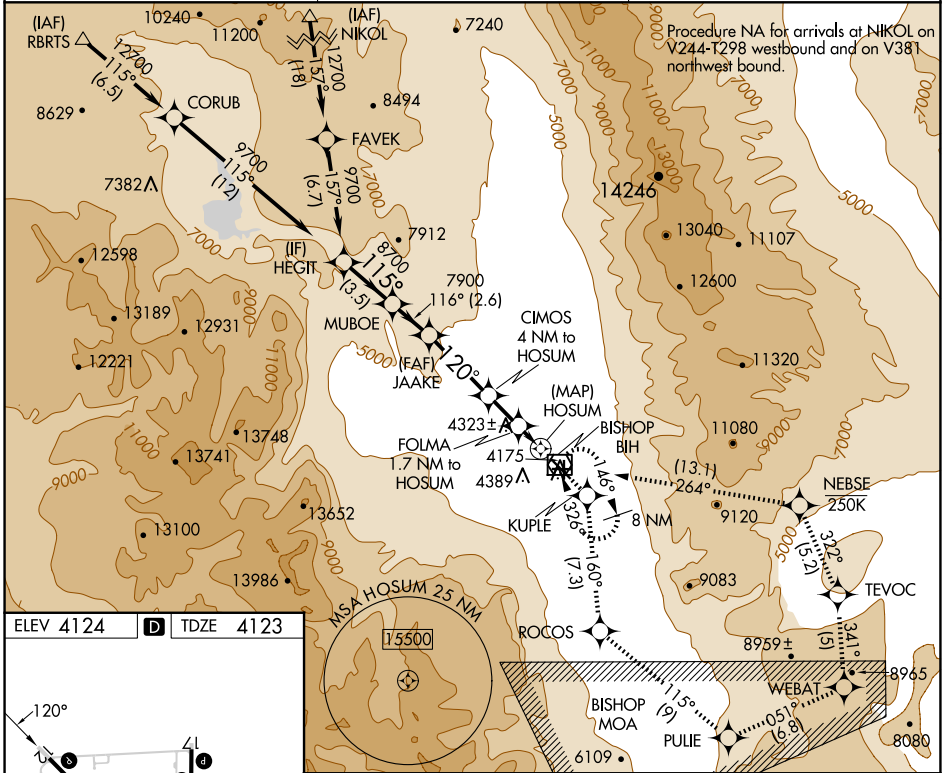
APP CRS	Rwy Idg	7098
120°	TDZE	4123
	Apt Elev	4124

RNAV (GPS) Z RWY 12

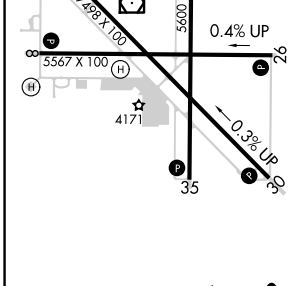
BISHOP (BIH)

RNP APCH-GPS.	MISSED APPROACH: (Do not exceed 250 KIAS until NEBSE) Climb to 13000 direct KUPLE and on track 160° to ROCOS and on track 115° to PULIE and on track 051° to WEBAT and on track 341° to TEVOC and on track 322° to NEBSE and on track 264° to BIH VOR/DME and hold.
<p>⚠ Rwy 12, helicopter visibility reduction below 3/4 SM NA.</p> <p>⚠ Missed approach requires minimum climb of 325 feet per NM to 11000; if unable, see RNAV (GPS) Y RWY 12.</p>	

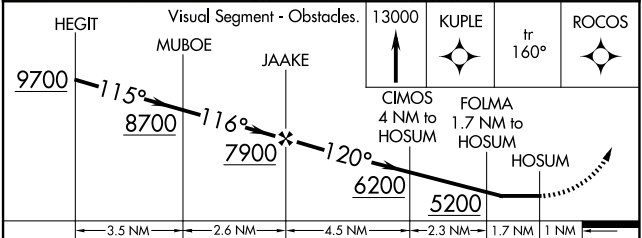
ASOS 119.025	OAKLAND CENTER 125.75 284.65	UNICOM 123.0 (CTAF)
------------------------	--	-------------------------------



ELEV 4124	D	TDZE 4123
-----------	----------	-----------



MIRL Rwy 8-26, 12-30, and 17-35
REL Rwy 12, 17, 30 and 35



CATEGORY	A	B	C	D
LNAV MDA	4580-1 1/4		457 (500-1 1/4)	NA
C CIRCLING	6420-1 1/4 2296 (2300-1 1/4)	6420-1 1/2 2296 (2300-1 1/2)	6420-3 2296 (2300-3)	NA

SW-2, 23 JAN 2025 to 20 FEB 2025

SW-2, 23 JAN 2025 to 20 FEB 2025