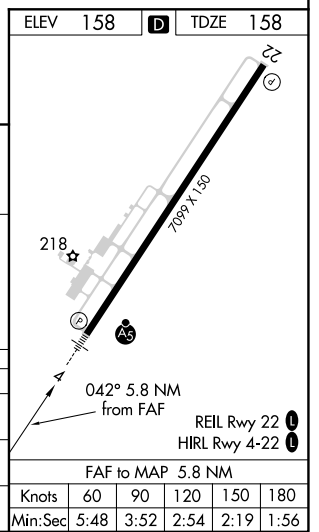
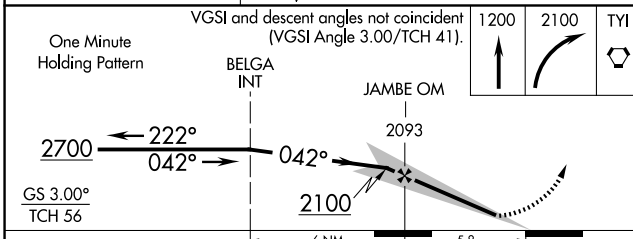
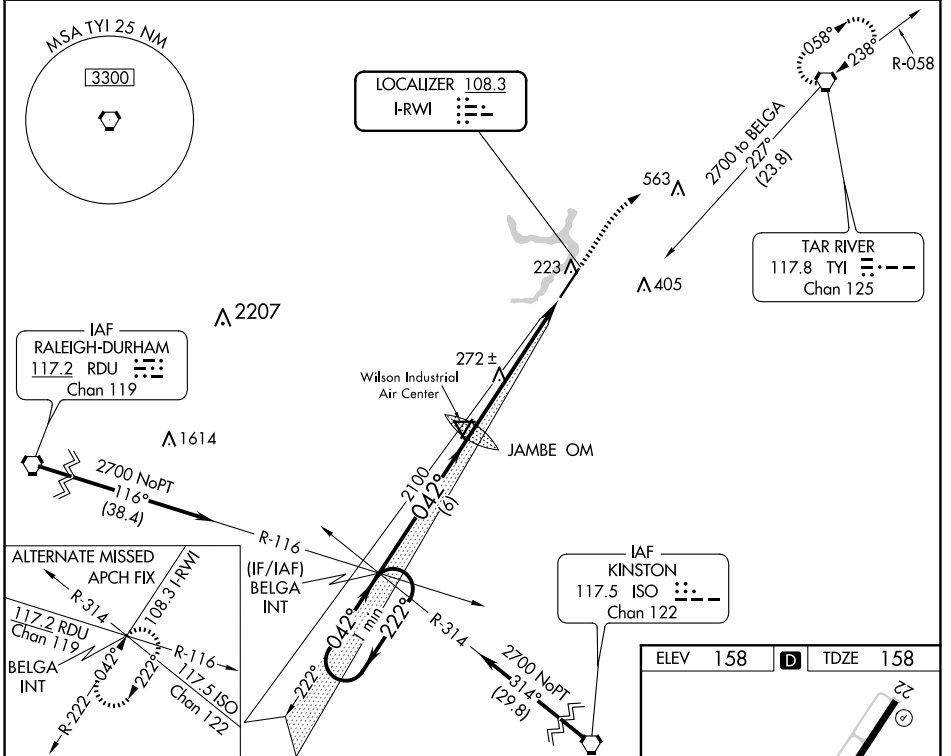


LOC I-RWI	APP CRS	Rwy Idg	<b>7099</b>
<b>108.3</b>	<b>042°</b>	TDZE	<b>158</b>
		Apt Elev	<b>158</b>

**ILS or LOC RWY 4**  
ROCKY MOUNT/WILSON RGNL (R.WI)

NA	MALS 	MISSED APPROACH: Climb to 2100 then climbing right turn to 2100 direct TYI VORTAC and hold.

ASOS <b>118.875</b>	WASHINGTON CENTER <b>123.85 279.65</b>	UNICOM <b>123.05 (CTAF)</b>
------------------------	---	--------------------------------



CATEGORY	A	B	C	D
S-ILS 4	408-1/2 250 (300-1/2)			
S-LOC 4	540-1/2 382 (400-1/2)	540-5/8 382 (400-3/4)		540-3/4 382 (400-3/4)
CIRCLING	600-1 442 (500-1)	620-1 462 (500-1)	720-1 562 (600-1/2)	740-2 582 (600-2)

SE-2, 23 JAN 2025 to 20 FEB 2025

SE-2, 23 JAN 2025 to 20 FEB 2025

FAF to MAP 5.8 NM					
Knots	60	90	120	150	180
Min:Sec	5:48	3:52	2:54	2:19	1:56