


LOC I-BPM <b>111.9</b>	APP CRS <b>133°</b>	Rwy Idg TDZE Apt Elev	<b>7000</b> <b>1031</b> <b>1031</b>
---------------------------	------------------------	-----------------------------	---

# ILS or LOC RWY 13

ST CLOUD RGNL (STC)

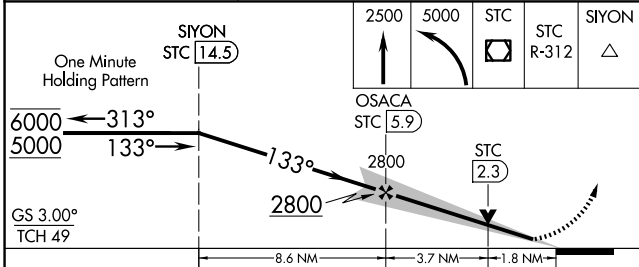
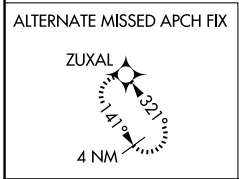
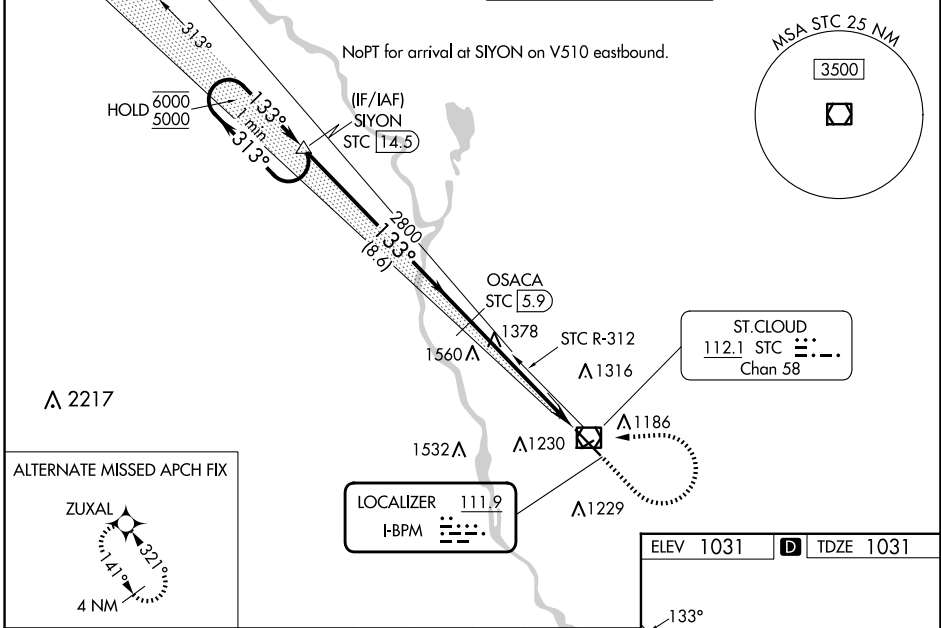
DME required.

**⚠** For inop ALS when using Little Falls altimeter setting, increase S-ILS-13 all Cats visibility to 7/8 SM. When local altimeter setting not received, use Little Falls altimeter setting, increase DA to 1307 feet; increase all MDAs 80 feet and S-LOC 13 visibility Cats C and D 1/4 SM, and Circling visibility Cats C and D 1/4 SM. For inop ALS, increase S-LOC 13 Cats C and D visibility to 1 3/4 SM. DME from STC VOR/DME. DME use requires simultaneous reception of I-BPM and STC DME. VDP NA when using Little Falls altimeter setting.

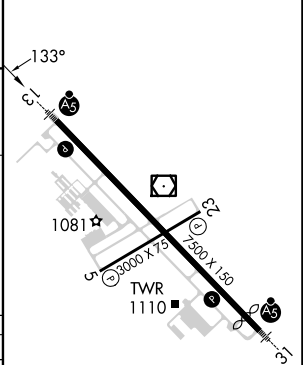
MALSR 

MISSED APPROACH: Climb to 2500 then climbing left turn to 5000 direct STC VOR/DME and on STC VOR/DME R-312 to SIYON/STC 14.5 DME and hold.

ATIS <b>119.375</b>	MINNEAPOLIS CENTER <b>121.05 235.775</b>	ST. CLOUD TOWER ★ <b>118.25 (CTAF) 0</b>	GND CON <b>123.75</b>
------------------------	---	---	--------------------------



ELEV 1031	<b>D</b> TDZE 1031
-----------	--------------------



CATEGORY	A	B	C	D
S-ILS 13	1231-1/2 200 (200-1/2)			
S-LOC 13	1640-1/2 609 (700-1/2)		1640-1 3/8 609 (700-1 3/8)	
CIRCLING	1640-1 609 (700-1)		1640-1 3/4 609 (700-1 3/4)	1860-2 3/4 829 (900-2 3/4)

MIRL Rwy 5-23 <b>0</b>					
HIRL Rwy 13-31 <b>0</b>					
FAF to MAP 5.4 NM					
Knots	60	90	120	150	180
Min:Sec	5:24	3:36	2:42	2:10	1:48

NC-1, 23 JAN 2025 to 20 FEB 2025

NC-1, 23 JAN 2025 to 20 FEB 2025