

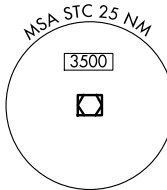
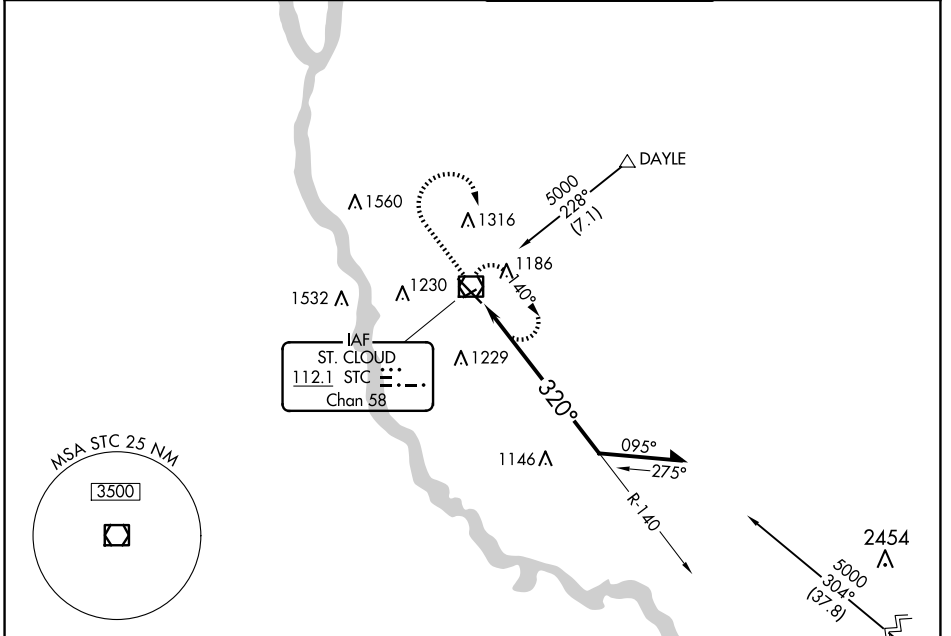
VOR/DME STC 112.1 Chan 58	APP CRS 320°	Rwy Idg TDZE 7000 1020	Apt Elev 1031
---	------------------------	--	-------------------------

VOR RWY 31

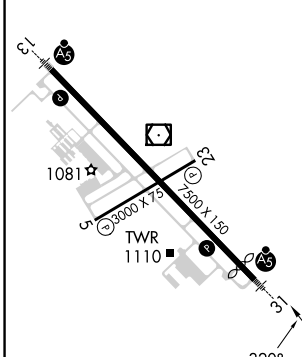
ST CLOUD RGNL (STC)

<p>⚠ For inop ALS, increase S-31 Cat C and D visibility to 1 3/8 SM.</p>	<p>MALSR AS</p>	<p>MISSED APPROACH: Climb to 2700 then right turn direct STC VOR/DME and hold.</p>
---	-----------------------------------	---

<p>ATIS 119.375</p>	<p>MINNEAPOLIS CENTER 121.05 235.775</p>	<p>ST. CLOUD TOWER ★ 118.25 (CTAF)</p>	<p>GND CON 123.75</p>
--------------------------------	---	---	----------------------------------

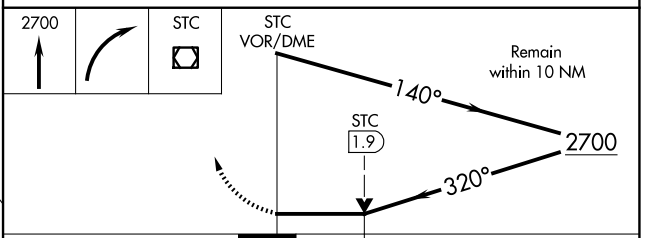


ELEV 1031	D	TDZE 1020
-----------	----------	-----------



MIRL Rwy 5-23
HIRL Rwy 13-31

Procedure NA for arrival on GEP VORTAC airway radials 260 CW 352.



CATEGORY	A	B	C	D
S-31	1460-1/2	440 (500-1/2)	1460-3/4 440 (500-3/4)	1460-1 440 (500-1)
CIRCLING	1500-1	469 (500-1)	1620-1 1/2 589 (600-1 1/2)	1860-2 3/4 829 (900-2 3/4)

NC-1, 23 JAN 2025 to 20 FEB 2025

NC-1, 23 JAN 2025 to 20 FEB 2025