

VORTAC UKW 117.15 Chan 118 (Y)	APP CRS 175°	Rwy Idg TDZE 5005 842 Apt Elev 864
----------------------------------------------------	------------------------	------------------------------------------------------------------

VOR/DME RWY 18

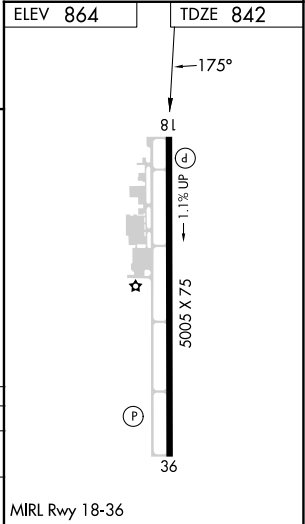
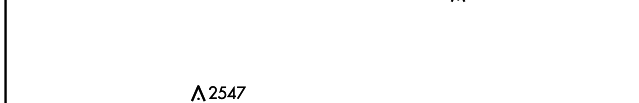
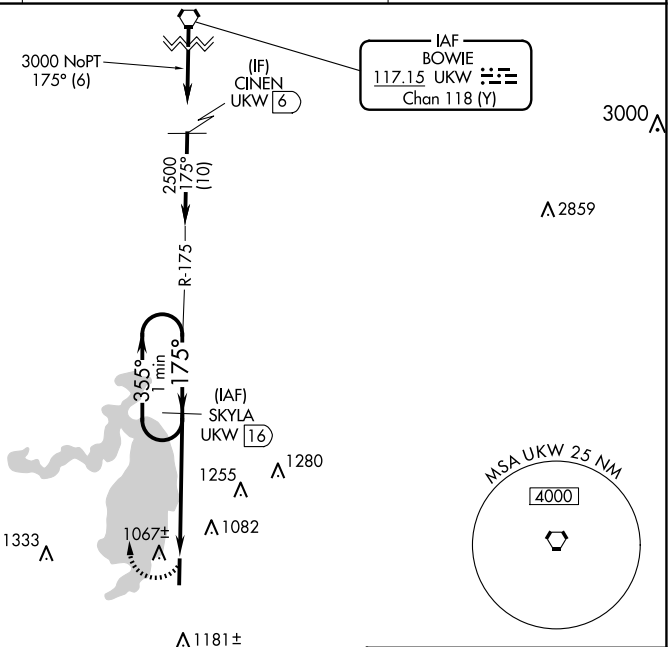
BRIDGEPORT MUNI (XBP)

⚠ Visibility reduction by helicopters NA. When local altimeter setting not received, use Decatur altimeter setting and increase all MDA 60 feet.

⚠ MISSED APPROACH: Climbing right turn to 2800 via UKW VORTAC R-175 to SKYLA/UKW 16 DME and hold.

AWOS-3PT 119.225	FORT WORTH CENTER 127.0 360.6	UNICOM 123.0 (CTAF)
----------------------------	-----------------------------------------	-------------------------------

Procedure NA for arrival on UKW VORTAC airway radials 184 CW 233.



CATEGORY	A	B	C	D
S-18	1440-1 598 (600-1)	1440-1¼ 598 (600-1¼)		NA
C CIRCLING	1480-1 616 (700-1)	1480-1¼ 616 (700-1¼)		NA

SC-2, 23 JAN 2025 to 20 FEB 2025

SC-2, 23 JAN 2025 to 20 FEB 2025