

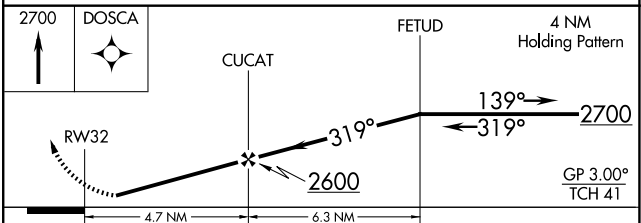
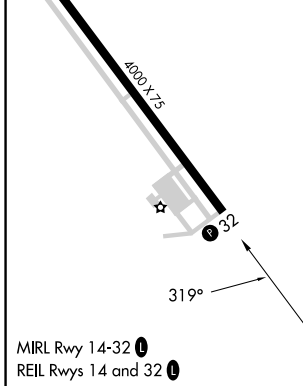
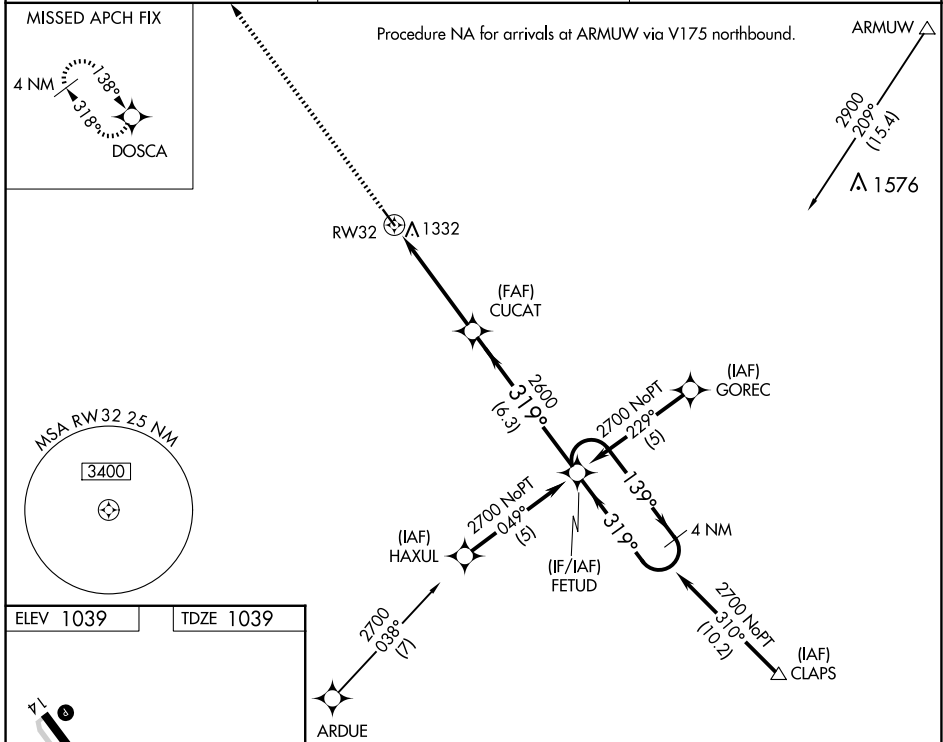
WAAS CH 99710 W32A	APP CRS 319°	Rwy Idg TDZE Apt Elev	4000 1039 1039
--	------------------------	-----------------------------	---

RNAV (GPS) RWY 32

BENSON MUNI (BBB)

RNP APCH.	MISSED APPROACH: Climb to 2700 direct DOSCA and hold.
<p>▼ For uncompensated Baro-VNAV systems, LNAV/VNAV NA below -17°C or above 54°C. Rwy 32 helicopter visibility reduction below ¼ SM NA. Baro-VNAV NA when using Appleton altimeter setting. When local altimeter setting not received, use Appleton altimeter setting and increase all DA and MDA 40 feet.</p>	

AWOS-3PT 118.45	MINNEAPOLIS CENTER 125.5 323.1	UNICOM 122.8 (CTAF) 0
---------------------------	--	---------------------------------



CATEGORY	A	B	C	D
LPV DA	1426-1½	387 (400-1½)		NA
LNAV/VNAV DA	1710-2½	671 (700-2½)		NA
LNAV MDA	1700-1	661 (700-1)		NA

NC-1, 23 JAN 2025 to 20 FEB 2025

NC-1, 23 JAN 2025 to 20 FEB 2025