

APP CRS	Rwy Idg	5002
102°	TDZE	73
	Apt Elev	73

RNAV (GPS) RWY 10

BERMUDA DUNES (UDD)

RNP APCH - GPS.

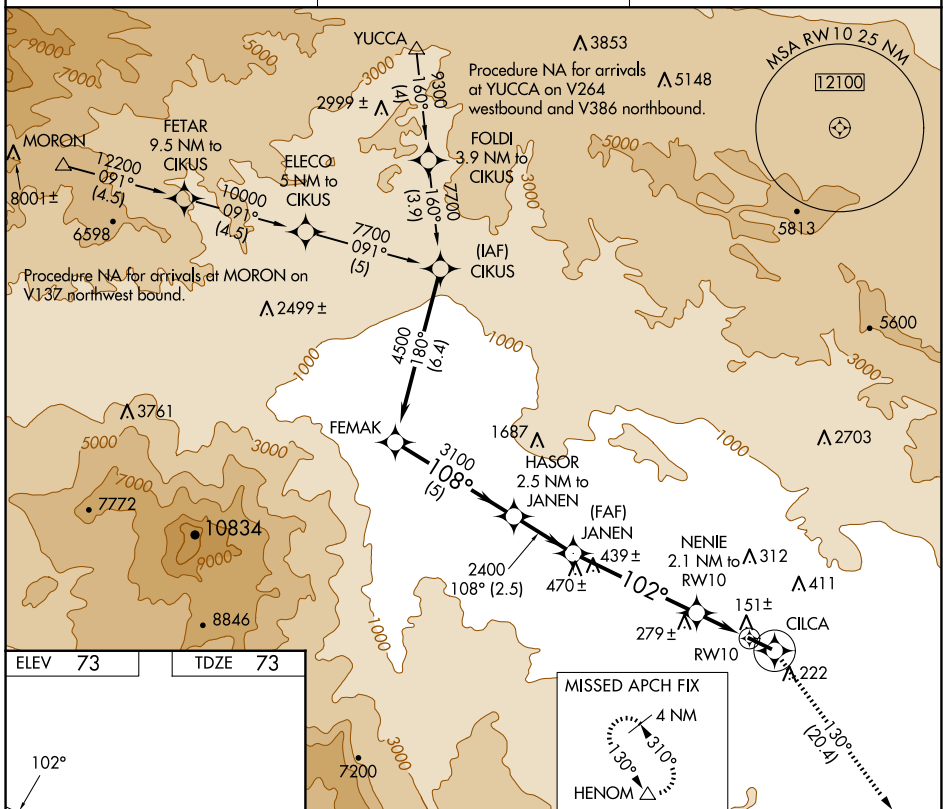
Use Jacqueline Cochran Rgnl altimeter setting.
 Circling Rwy 28 NA at night.

MISSED APPROACH: Climb to 3700 direct CILCA and via 130° track to HENOM and hold.

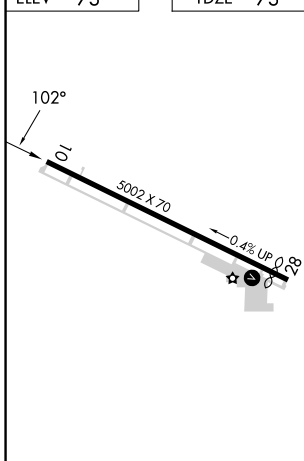
TRM ASOS
118.325

SOCAL APP CON *
135.275 251.1

UNICOM
122.8 (CTAF) 0



ELEV	73	TDZE	73
------	----	------	----



REIL Rwy 28
 MIRL Rwy 10-28



	FEMAK	HASOR 2.5 NM to JANEN	JANEN	3700	CILCA	HENOM
				↑		130° Tr
	4500		3100			
Procedure Turn NA			2400			
				3.08° TCH 40		
					NENIE 2.1 NM to RWY 10	
						800
						RWY 10
	5 NM		2.5 NM	4.9 NM		2.1 NM
CATEGORY	A	B	C	D		
LNAV MDA	480-1	407 (500-1)	480-1¼ 407 (500-1¼)	NA		
CIRCLING	700-1	627 (700-1)	1100-3 1027 (1100-3)	NA		

SW-3, 23 JAN 2025 to 20 FEB 2025

SW-3, 23 JAN 2025 to 20 FEB 2025