

WAAS CH <b>42810</b> W05A	APP CRS <b>045°</b>	Rwy Idg TDZE Apt Elev	<b>5000</b> <b>35</b> <b>37</b>
---------------------------------	------------------------	-----------------------------	---------------------------------------

# RNAV (GPS) RWY 5

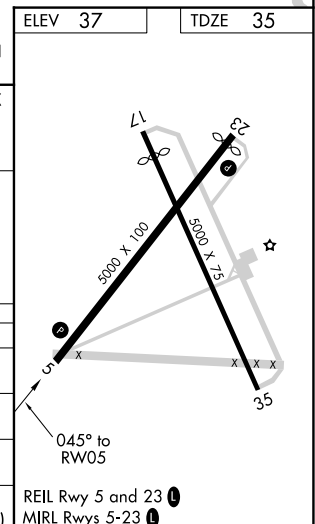
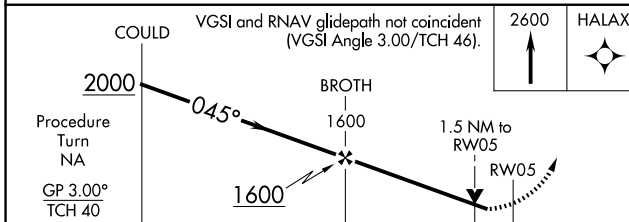
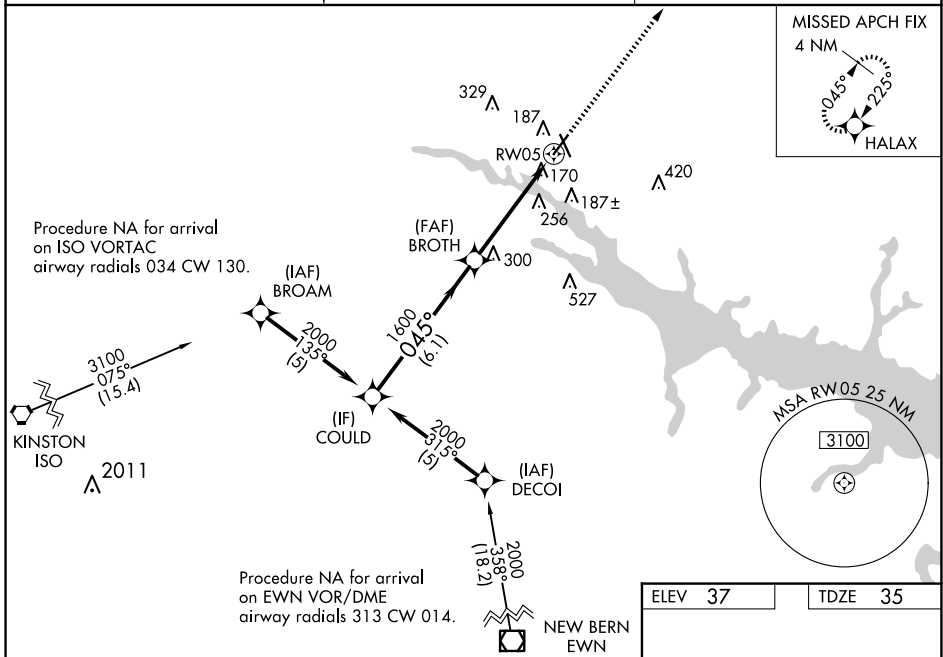
WASHINGTON-WARREN (OCW)

RNP APCH-GPS.

⚠ Circling Rwy 17 NA at night. Baro-VNAV and VDP NA when using Greenville altimeter setting.  
 ⚠ For uncompensated Baro-VNAV systems, LNAV/VNAV NA below -15°C or above 54°C.  
 Rwy 5 helicopter visibility reduction below 3/4 SM NA. When local altimeter setting not received, use Greenville altimeter setting: increase LPV DA to 484 feet and visibility 1/4 SM, and LNAV/VNAV DA to 519 feet; increase all MDAs 60 feet and visibility LNAV Cat C/D 1/2 SM.

MISSED APPROACH:  
Climb to 2600 direct HALAX and hold.

AWOS-3 <b>120.175</b>	CHERRY POINT APP CON <b>119.35 377.175</b>	UNICOM <b>122.7 (CTAF)</b>
--------------------------	---	-------------------------------



CATEGORY	A	B	C	D
LPV DA		442-1 3/8	407 (500-1 1/8)	
LNAV/VNAV DA		477-1 3/8	442 (500-1 3/8)	
LNAV MDA	560-1	525 (600-1)	560-1 1/2	525 (600-1 1/2)
CIRCLING	560-1	523 (600-1)	640-1 1/4 603 (700-1 1/4)	780-2 1/2 743 (800-2 1/2)

SE-2, 23 JAN 2025 to 20 FEB 2025

SE-2, 23 JAN 2025 to 20 FEB 2025