

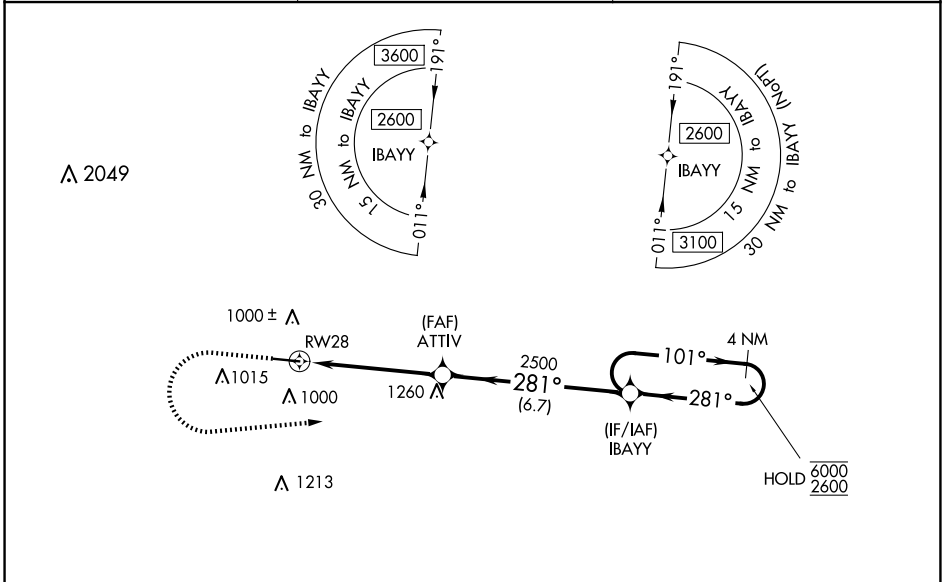
WAAS CH 72710 W28A	APP CRS 281°	Rwy Idg TDZE 810 Apt Elev 820
--	------------------------	---

RNAV (GPS) RWY 28

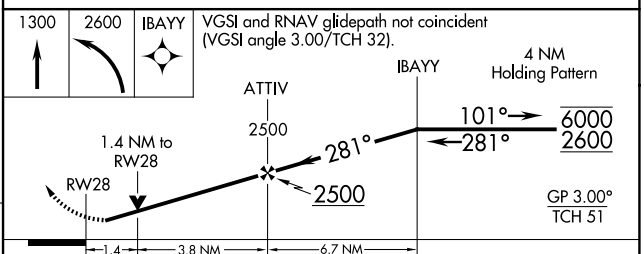
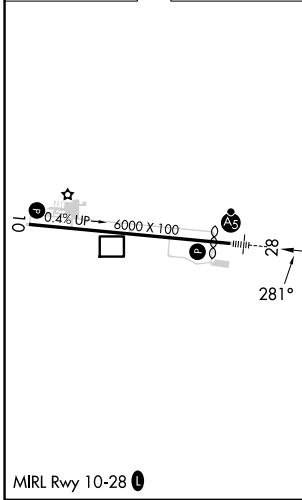
COVINGTON MUNI (CVC)

RNP APCH - GPS.	MALSRL	MISSED APPROACH: Climb to 1300 then climbing left turn to 2600 direct IBAYY and hold.
<p>Circling Rwy 10 NA at night. Rwy 28 helicopter visibility reduction below 3/4 SM NA. For uncompensated Baro-VNAV systems, LNAV/VNAV NA below -16°C or above 54°C. For inop ALS, increase LNAV Cat C/D visibility to 1 1/2 SM.</p>		

AWOS-3 118.725	ATLANTA APP CON 128.575 343.675	UNICOM 123.0 (CTAF) 0
--------------------------	---	---------------------------------



ELEV 820	D	TDZE 810
----------	----------	----------



CATEGORY	A	B	C	D
LPV DA		1078-7/8	268 (300-7/8)	
LNAV/VNAV DA		1243-7/8	433 (500-7/8)	
LNAV MDA		1280-1	470 (500-1)	
C CIRCLING	1320-1	500 (500-1)	1380-1 1/2 560 (600-1 1/2)	1380-2 560 (600-2)

SE-4, 23 JAN 2025 to 20 FEB 2025

SE-4, 23 JAN 2025 to 20 FEB 2025