

WAAS CH <b>99510</b> <b>W10A</b>	APP CRS <b>102°</b>	Rwy Idg TDZE Apt Elev	<b>5506</b> <b>1014</b> <b>1014</b>
--	------------------------	-----------------------------	---

# RNAV (GPS) RWY 10

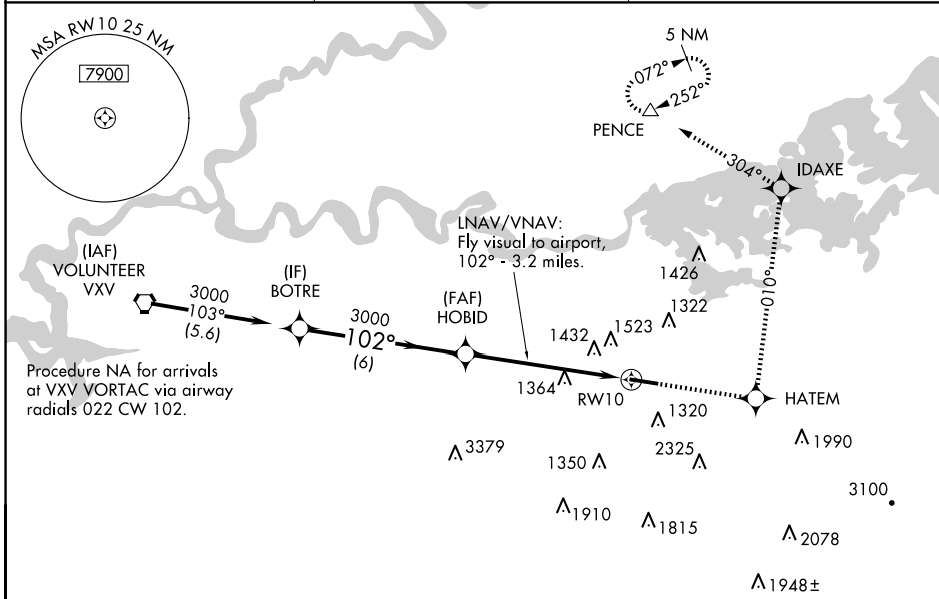
GATLINBURG-PIGEON FORGE (GKT)

RNP APCH - GPS.

**▽** LNAV/VNAV NA when using Mc Ghee Tyson altimeter setting. For uncompensated Baro-VNAV systems, LNAV/VNAV NA below -17°C or above 47°C. Helicopter visibility reduction below 3/4 SM NA. When local altimeter setting not received, use Mc Ghee Tyson altimeter setting; increase LPV DA to 1425 feet, and all visibilities 1/2 SM; increase all MDAs 60 feet and Circling visibility Cat A 1/2 SM. Circling to Rwy 28 NA at night. Procedure NA at night.

**MISSED APPROACH:** Climb to 4000 direct HATEM and via 010° track to IDAXE and via 304° track to PENCE and hold.

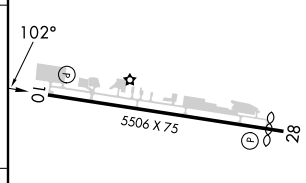
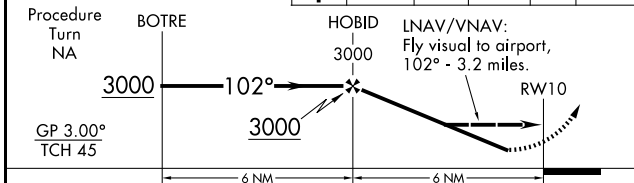
AWOS-3 <b>126.875</b>	KNOXVILLE APP CON <b>132.8 360.8</b>	UNICOM <b>123.0 (CTAF) 0</b>
--------------------------	---	---------------------------------



Procedure NA for arrivals at VXX VORTAC via airway radials 022 CW 102.

ELEV 1014	TDZE 1014
-----------	-----------

VGSI and RNAV glidepath not coincident (VGSI Angle 3.50/TCH 33).	4000	HATEM	IDAXE	PENCE
	↑	✧	tr 010°	✧
			tr 304°	△



CATEGORY	A	B	C	D
LPV DA	1371-1¼		357 (400-1¼)	
LNAV/ VNAV DA	2013-2	999 (1000-2)	2013-3	999 (1000-3)
LNAV MDA	1800-1 786 (800-1)	1800-1¼ 786 (800-1¼)	1800-2¼ 786 (800-2¼)	1800-2½ 786 (800-2½)
CIRCLING	1800-1 786 (800-1)	1880-1¼ 866 (900-1¼)	2040-3 1026 (1100-3)	2680-3 1666 (1700-3)

REIL Rws 10 and 28 0

MIRL Rwy 10-28 0

SE-1, 23 JAN 2025 to 20 FEB 2025

SE-1, 23 JAN 2025 to 20 FEB 2025