

APP CRS	Rwy Idg	4887
175°	TDZE	707
	Apt Elev	719

RNAV (GPS) RWY 17

BOYNE MOUNTAIN (BFA)

RNP APCH - GPS

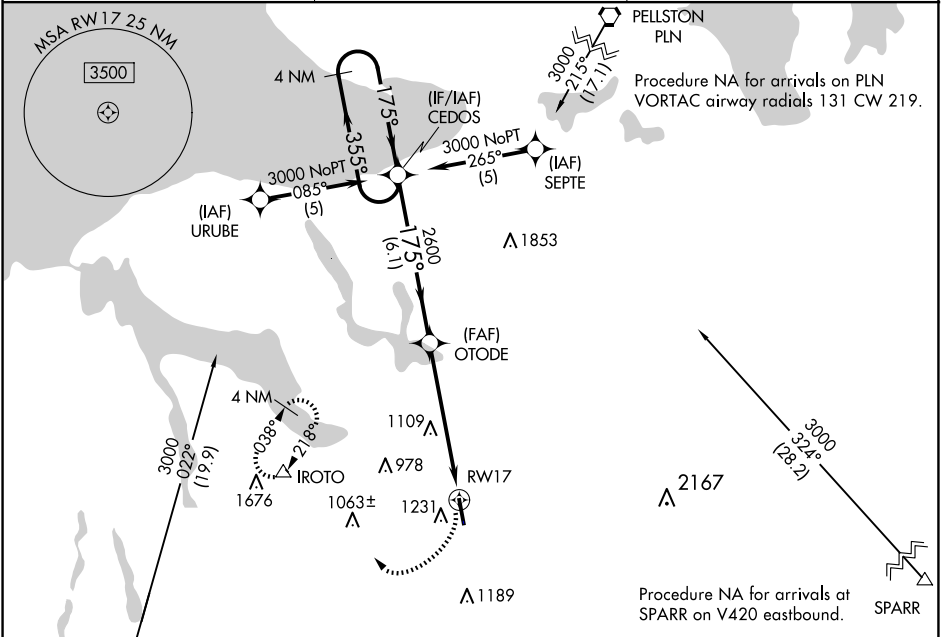
NA Circling NA west of Rwy 17-35. Rwy 17 helicopter visibility reduction below 1 SM NA. Procedure NA at night. When local altimeter setting not received, use Belleaire altimeter setting. VDP NA when using Belleaire altimeter setting.

MISSED APPROACH:
Climbing right turn to 3000 direct IROTO and hold.

AWOS-3PT
118.675

MINNEAPOLIS CENTER
134.6 354.05

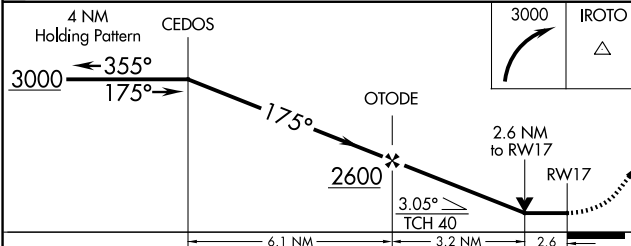
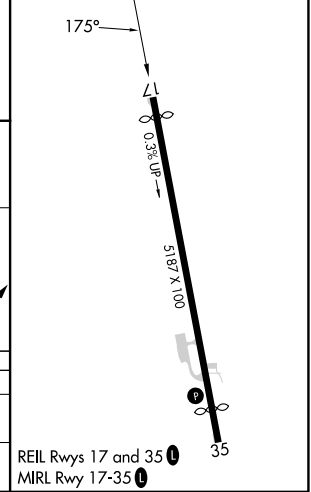
UNICOM
122.8 (CTAF) 0



EC-1, 23 JAN 2025 to 20 FEB 2025

EC-1, 23 JAN 2025 to 20 FEB 2025

ELEV	719	TDZE	707
------	------------	------	------------



CATEGORY	A	B	C	D
LNVA MDA	1580 - 1 873 (900-1)	1580 - 1¼ 873 (900-1¼)	1580 - 2½ 873 (900-2½)	1580 - 2¾ 873 (900-2¾)
CIRCLING	1580 - 1¼ 861 (900-1¼)		1760 - 3 1041 (1100-3)	1880 - 3 1161 (1200-3)

REIL Rwy 17 and 35 **0**
MIRL Rwy 17-35 **0**