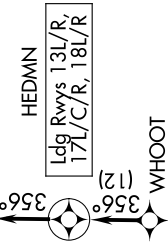


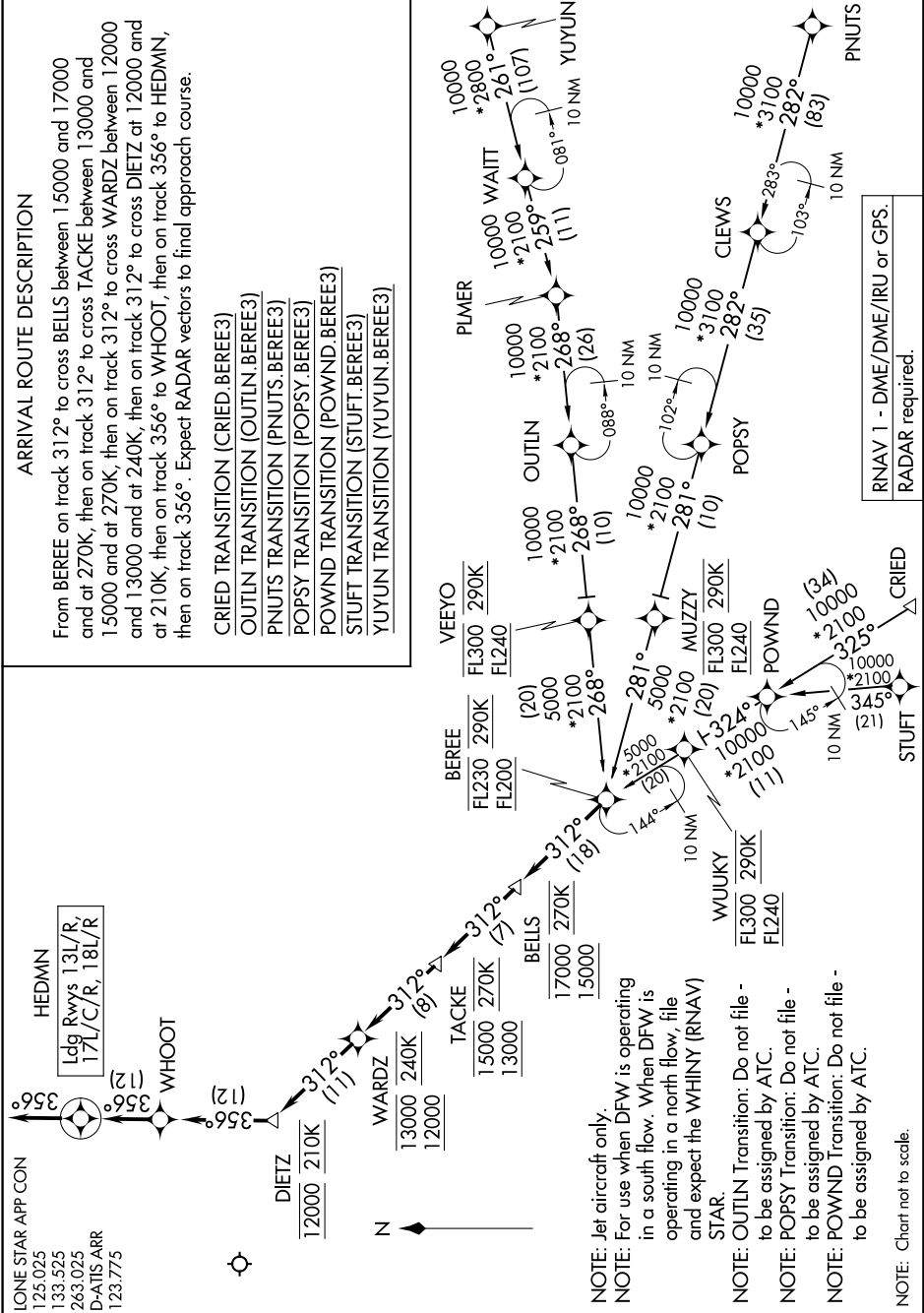
LONE STAR APP CON
 125.025
 133.525
 263.025
 D-ATIS ARR
 123.775



ARRIVAL ROUTE DESCRIPTION

From BEREE on track 312° to cross BELLS between 15000 and 17000 and at 270K, then on track 312° to cross TACKE between 13000 and 15000 and at 270K, then on track 312° to cross WARDZ between 12000 and 13000 and at 240K, then on track 312° to cross DIETZ at 12000 and at 210K, then on track 356° to WHOOT, then on track 356° to HEDMN, then on track 356°. Expect RADAR vectors to final approach course.

CRIED TRANSITION (CRIED.BEREE3)
 OUTLN TRANSITION (OUTLN.BEREE3)
 PNUYS TRANSITION (PNUYS.BEREE3)
 PPOYS TRANSITION (PPOYS.BEREE3)
 POWND TRANSITION (POWND.BEREE3)
 STUFT TRANSITION (STUFT.BEREE3)
 YUYUN TRANSITION (YUYUN.BEREE3)



NOTE: Jet aircraft only.

NOTE: For use when DFW is operating in a south flow. When DFW is operating in a north flow, file and expect the WHINY (RNAV) STAR.

NOTE: OUTLN Transition: Do not file - to be assigned by ATC.

NOTE: POPY Transition: Do not file - to be assigned by ATC.

NOTE: POWND Transition: Do not file - to be assigned by ATC.

NOTE: Chart not to scale.

RNAV 1 - DME/DME/IRU or GPS.
RADAR required.