

| | | |
|---|------------------------|--|
| LOC/DME I-LWN 109.5 Chan 32 | APP CRS 135° | Rwy Idg TDZE Apt Elev 9300 591 607 |
|---|------------------------|--|

CONVERGING ILS RWY 13R

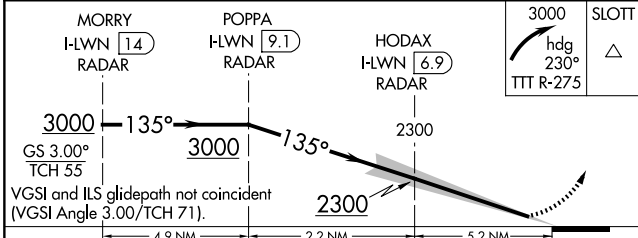
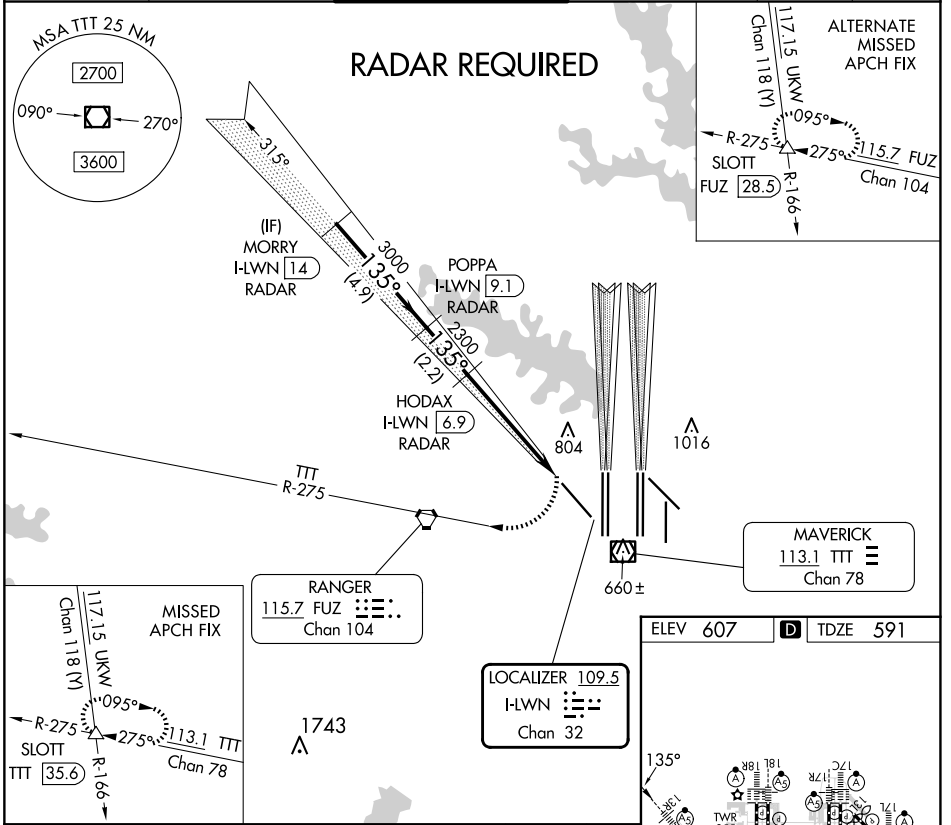
DALLAS-FORT WORTH INTL (DFW)

⚠ Simultaneous converging approach authorized with Converging ILS Rwy 18L/R and Converging ILS Rwy 17C/R. For inop MALSR, increase ILS 13R all Cats visibility to 2 $\frac{3}{4}$.

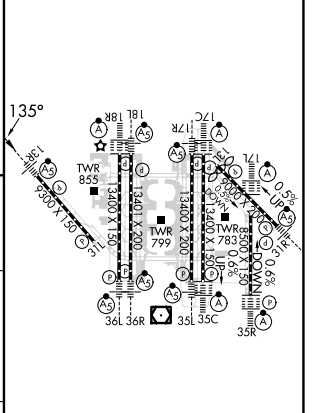
MALSR

MISSED APPROACH: Climbing right turn to 3000 on heading 230° and TTT VOR/DME R-275 to SLOTT/TTT 35.6 DME and hold.

| | | | | | |
|--|--|---|---|---------------------------|-------|
| D-ATIS ARR 123.775 DEP 135.925 | LONE STAR APP CON 133.15 118.1 | DFW TOWER 126.55 127.5 EAST 124.15 134.9 WEST | GND CON 121.65 121.8 EAST 121.85 WEST | CLNC DEL 128.25 | CPDLC |
|--|--|---|---|---------------------------|-------|



| | |
|----------|-------------------|
| ELEV 607 | D TDZE 591 |
|----------|-------------------|



| | | | | |
|-----------|----------------------|----------------------------|--|----|
| CATEGORY | A | B | C | D |
| S-ILS 13R | 1401-2 $\frac{1}{2}$ | 810 (800-2 $\frac{1}{2}$) | 1441-2 $\frac{1}{2}$ 850 (900-2 $\frac{1}{2}$) | NA |

HIRL all Rwy's
REIL Rwy's 13L and 31L
TDZ/CL all Rwy's except 13L, and 31L

SC-2, 23 JAN 2025 to 20 FEB 2025

SC-2, 23 JAN 2025 to 20 FEB 2025