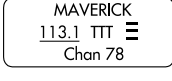
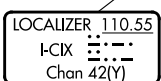
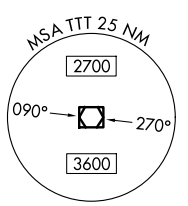
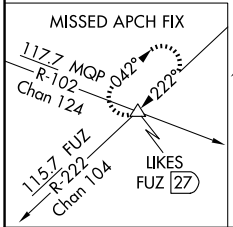
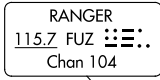
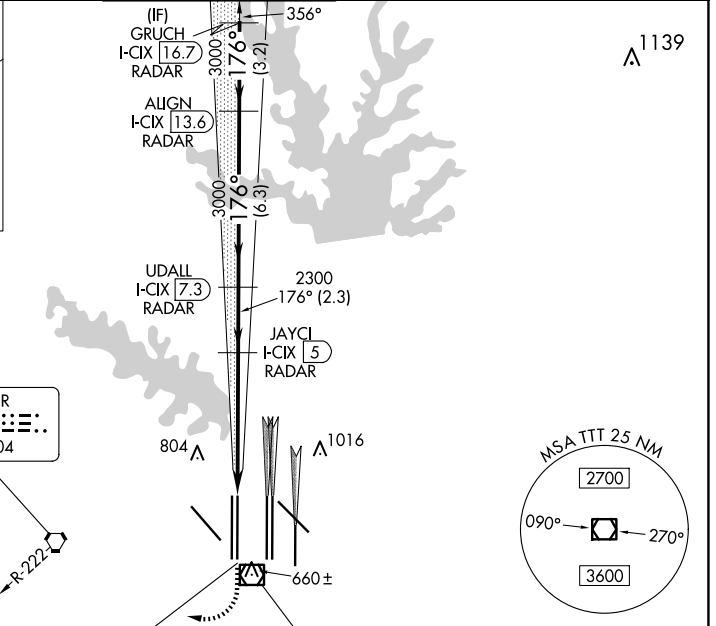
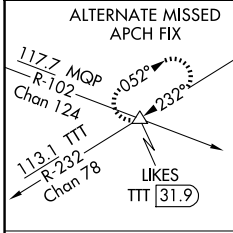


LOC/DME I-CIX <b>110.55</b> Chan 42(Y)	APP CRS <b>176°</b>	Rwy Idg TDZE Apt Elev <b>13401</b> <b>602</b> <b>606</b>
----------------------------------------------	------------------------	-------------------------------------------------------------------------

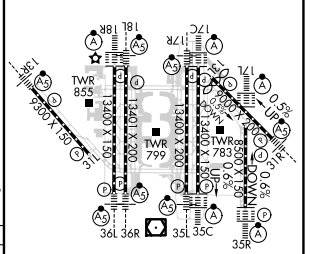
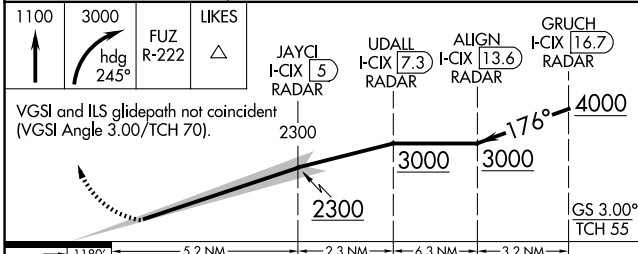
# ILS RWY 18L (SA CAT I & II)

DALLAS-FORT WORTH INTL (DFW)

RADAR required for procedure entry. DME or RADAR required.		MALSR 	MISSED APPROACH: Climb to 1100, then climbing right turn to 3000 on heading 245° and FUZ VORTAC R-222 to LIKES INT/FUZ 27 DME and hold.			
D-ATIS ARR DEP <b>123.775</b> <b>135.925</b>	LONE STAR APP CON <b>118.425</b>	DFW TOWER <b>126.55 127.5</b> EAST <b>124.15 134.9</b> WEST		GND CON <b>121.65 121.8</b> EAST <b>121.85</b> WEST	CLNC DEL <b>128.25</b>	CPDLC



ELEV 606	TDZE 602
----------	----------



CATEGORY	A	B	C	D
S-ILS 18L	SA CAT I	RA 158/14	150 DA 752	
S-ILS 18L	SA CAT II	RA 115/12	100 DA 702	

## SA CATEGORY I & II ILS - SPECIAL AIRCREW & AIRCRAFT CERTIFICATION REQUIRED

HIRL all Rwys  
REIL Rwy 13L and 31L  
TDZ/CL all Rwys except 13L and 31L

SC-2, 23 JAN 2025 to 20 FEB 2025

SC-2, 23 JAN 2025 to 20 FEB 2025