

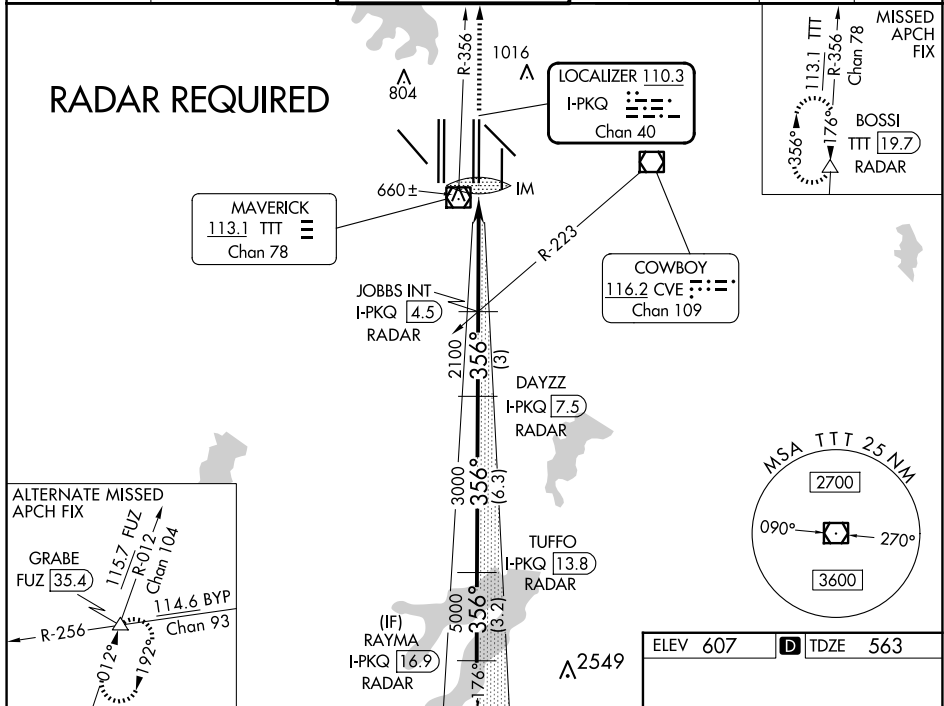
LOC/DME I-PKQ 110.3 Chan 40	APP CRS 356°	Rwy Idg TDZE Apt Elev	13400 563 607
---	------------------------	-----------------------------	--

ILS RWY 35C (CAT II & III)

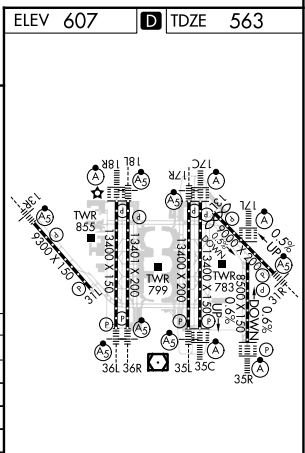
DALLAS-FORT WORTH INTL (DFW)

DME or RADAR required. Simultaneous approach authorized with Rwy 35R, Rwy 36L/R.		ALSF-2 	MISSED APPROACH: Climb to 3000 on TTT VOR/DME R-356 to BOSSI/TTT 19.7 DME/RADAR and hold.
---	--	------------	---

D-ATIS ARR 123.775 DEP 135.925	LONE STAR APP CON 127.075	DFW TOWER 126.55 127.5 EAST 124.15 134.9 WEST	GND CON 121.65 121.8 EAST 121.85 WEST	CLNC DEL 128.25	CPDLC
--	-------------------------------------	---	---	---------------------------	-------



3000 TTT R-356	BOSSI 	VGSi and ILS glidepath not coincident (VGSi Angle 3.00/TCH 76).		TUFFO I-PKQ [13.8] RADAR	RAYMA I-PKQ [16.9] RADAR
IM 663	2100	3000	5000	6000	GS 3.00° TCH 59
1050	4.6 NM	3 NM	6.3 NM	3.2 NM	
CATEGORY	A	B	C	D	
S-ILS 35C	CAT II RA 100/12 100 DA 663				
S-ILS 35C	CAT IIIa RVR 07				
S-ILS 35C	CAT IIIb RVR 06				
S-ILS 35C	CAT IIIc NA				



CATEGORY II & III ILS - SPECIAL AIRCREW & AIRCRAFT CERTIFICATION REQUIRED

HIRL all Rwys
REIL Rwys 13L and 31L
TDZ/CL all Rwys except 13L and 31L

SC-2, 23 JAN 2025 to 20 FEB 2025

SC-2, 23 JAN 2025 to 20 FEB 2025