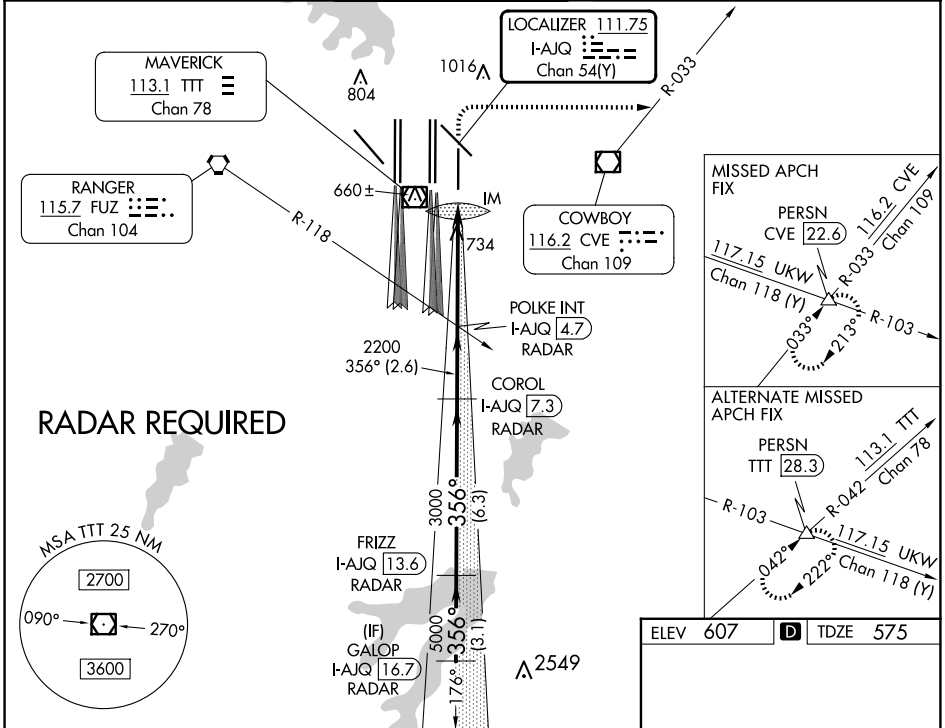


LOC/DME I-AJQ 111.75 Chan 54(Y)	APP CRS 356°	Rwy Idg TDZE Apt Elev 8500 575 607
--	------------------------	--

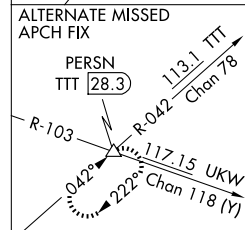
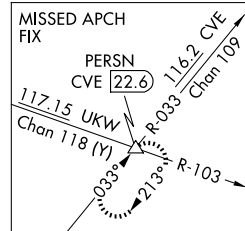
ILS RWY 35R (CAT II & III)

DALLAS-FORT WORTH INTL (DFW)

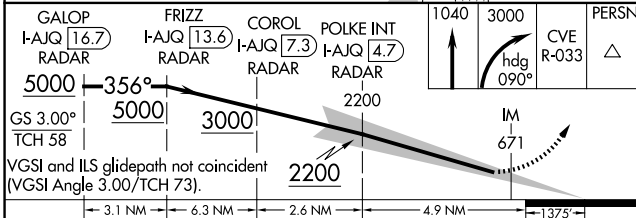
Simultaneous approach authorized with Rwy 36L/R and Rwy 35L/C. DME required.		ALSF-2	MISSED APPROACH: Climb to 1040 then climbing right turn to 3000 on heading 090° and CVE VOR/DME R-033 to PERSN/CVE 22.6 DME and hold.		
D-ATIS ARR 123.775 DEP 135.925	LONE STAR APP CON 119.4	DFW TOWER 126.55 127.5 EAST 124.15 134.9 WEST	GND CON 121.65 121.8 EAST 121.85 WEST	CLNC DEL 128.25	CPDLC



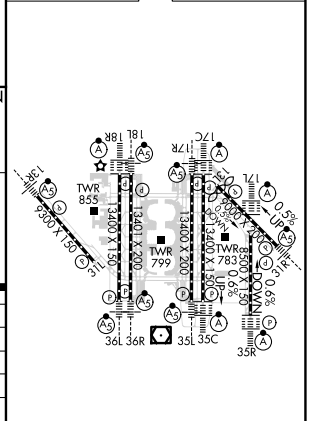
RADAR REQUIRED



ELEV 607	D TDZE 575
----------	-------------------



GALOP I-AJQ 16.7 RADAR	FRIZZ I-AJQ 13.6 RADAR	COROL I-AJQ 7.3 RADAR	POLKE INT I-AJQ 4.7 RADAR	1040	3000	CVE R-033	PERSN
5000	5000	3000	2200	IM	671		
GS 3.00°	TCH 58						
VGS1 and ILS glidepath not coincident (VGS1 Angle 3.00/TCH 73).							
3.1 NM		6.3 NM		2.6 NM		4.9 NM	
A		B		C		D	
S-ILS 35R	CAT II RA 94/12			100 DA 675			
S-ILS 35R	CAT IIIa			RVR 07			
S-ILS 35R	CAT IIIb			RVR 06			
S-ILS 35R	CAT IIIc			NA			



CATEGORY II & III ILS - SPECIAL AIRCREW & AIRCRAFT CERTIFICATION REQUIRED

HIRL all Rwys
REL Rwys 13L and 31L
TDZ/CL all Rwys except 13L, and 31L

SC-2, 23 JAN 2025 to 20 FEB 2025

SC-2, 23 JAN 2025 to 20 FEB 2025