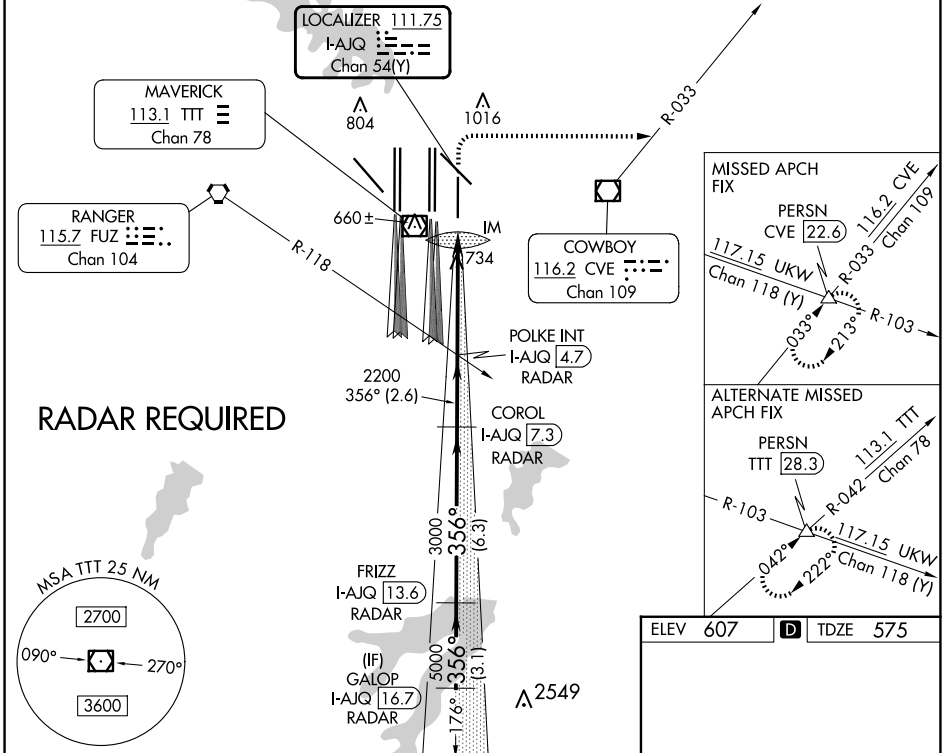


| | | |
|--|------------------------|--|
| LOC/DME I-AJQ 111.75 Chan 54(Y) | APP CRS 356° | Rwy Idg TDZE Apt Elev 8500 575 607 |
|--|------------------------|--|

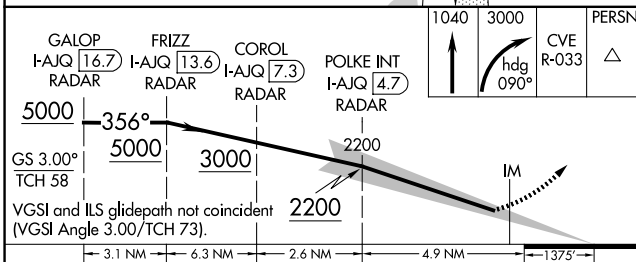
ILS RWY 35R (SA CAT I)

DALLAS-FORT WORTH INTL (DFW)

| | | | | | |
|--|-----------------------------------|---|---|---------------------------|-------|
| ▽ Simultaneous approach authorized with Rwy 36L/R and Rwy 35L/C. DME required. Requires specific OPSPEC, MSPEC, or LOA approval and use of HUD to DH. | | ALSF-2 | MISSED APPROACH: Climb to 1040 then climbing right turn to 3000 on heading 090° and CVE VOR/DME R-033 to PERSN/CVE 22.6 DME and hold. | | |
| D-ATIS ARR 123.775 DEP 135.925 | LONE STAR APP CON 119.4 | DFW TOWER 126.55 127.5 EAST 124.15 134.9 WEST | GND CON 121.65 121.8 EAST 121.85 WEST | CLNC DEL 128.25 | CPDLC |

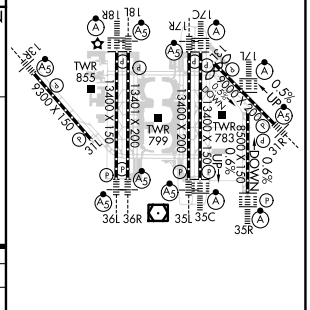


| | |
|----------|-------------------|
| ELEV 607 | D TDZE 575 |
|----------|-------------------|



| | | | | |
|-----------|----------------------|---|---|---|
| CATEGORY | A | B | C | D |
| S-ILS 35R | RA 144/14 150 DA 725 | | | |

SA CATEGORY I ILS - SPECIAL AIRCREW & AIRCRAFT CERTIFICATION REQUIRED



SC-2, 23 JAN 2025 to 20 FEB 2025

SC-2, 23 JAN 2025 to 20 FEB 2025