

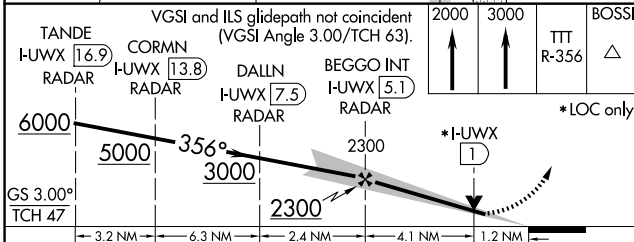
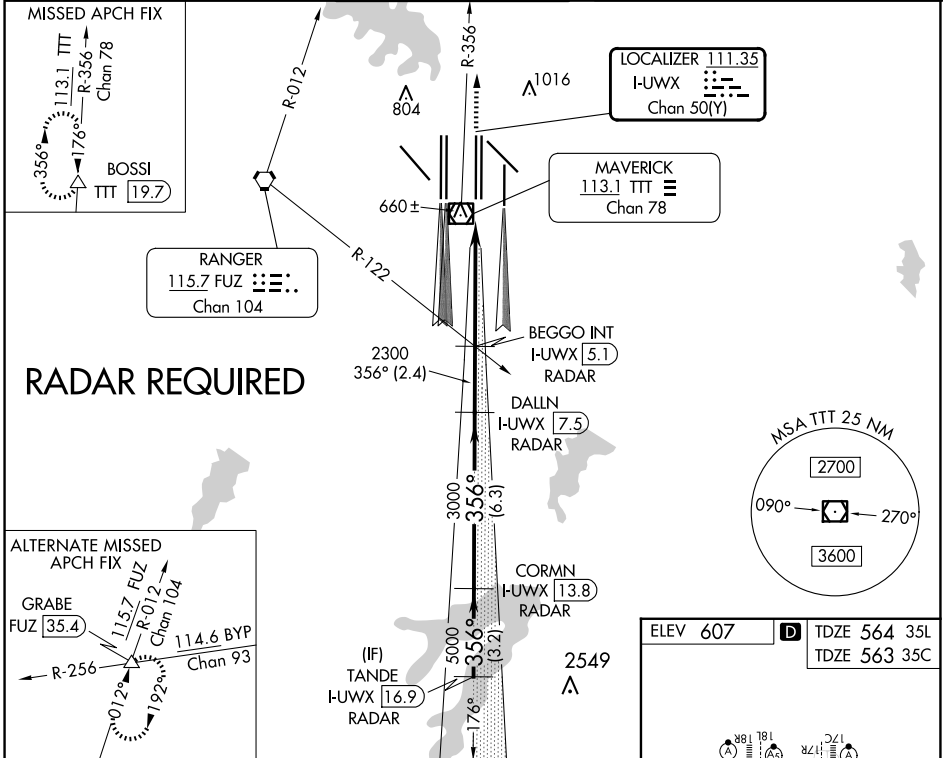
LOC/DME I-UWX 111.35 Chan 50 (Y)	APP CRS 356°	Rwy Idg 35L 35C TDZE 564 563 Apt Elev 607 607
--	------------------------	--

ILS or LOC RWY 35L

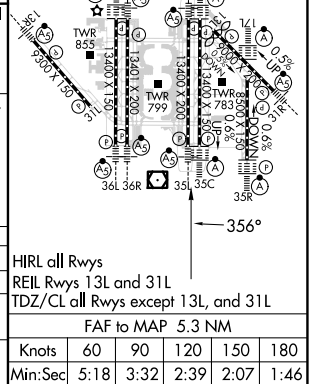
DALLAS-FORT WORTH INTL (DFW)

DME or RADAR required. Simultaneous approach authorized with Rwy 36 L/R and Rwy 35R. Inop table does not apply to Sidestep Rwy 35C.	Rwy 35L MALS R 	Rwy 35C ALS F-2 	MISSED APPROACH: Climb to 2000 then climb to 3000 on TTT VOR/DME R-356 to BOSSI/TTT 19.7 DME and hold.
---	-----------------------	------------------------	--

D-ATIS ARR 123.775 DEP 135.925	LONE STAR APP CON 127.075	DFW TOWER 126.55 127.5 EAST 124.15 134.9 WEST	GND CON 121.65 121.8 EAST 121.85 WEST	CLNC DEL 128.25	CPDLC
--	-------------------------------------	---	---	---------------------------	-------



CATEGORY	A	B	C	D
S-ILS 35L	764/18 200 (200-1/2)			
S-LOC 35L	1000/24	436 (400-1/2)	1000/40	436 (400-3/4)
SIDESTEP 35C	1000-1	437 (400-1)	1000-1 1/2	1000-2
			437 (400-1 1/2)	437 (400-2)



SC-2, 23 JAN 2025 to 20 FEB 2025

SC-2, 23 JAN 2025 to 20 FEB 2025