

WAAS CH 99407 W18B	APP CRS 176°	Rwy Idg 13400 TDZE 606 Apt Elev 606
--	------------------------	--

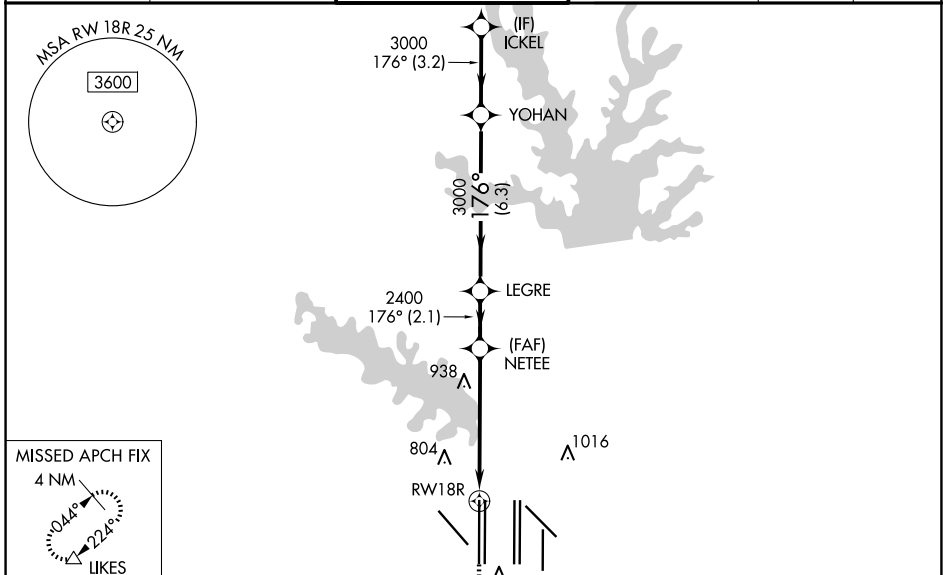
RNAV (GPS) RWY 18R

DALLAS-FORT WORTH INTL (DFW)

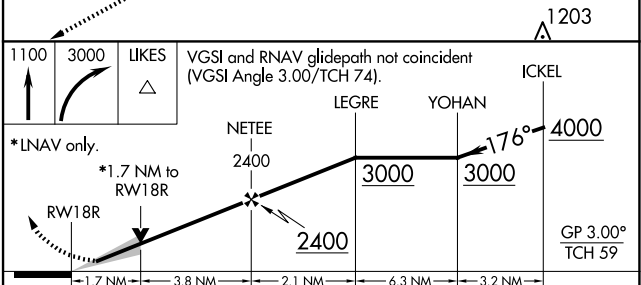
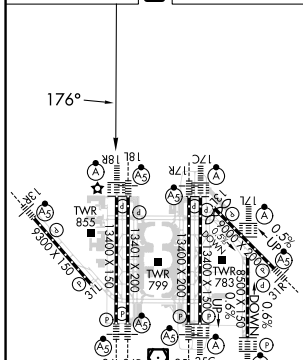
RADAR required for procedure entry. RNP APCH.

MISSED APPROACH: Climb to 1100 then climbing right turn to 3000 direct LIKES and hold.

D-ATIS ARR 123.775 DEP 135.925	LONE STAR APP CON 118.425	DFW TOWER 126.55 EAST 127.5 WEST	GND CON 121.65 EAST 121.8 WEST	CLNC DEL 128.25	CPDLC
--	-------------------------------------	--	--	---------------------------	-------



ELEV 606	D	TDZE 606
----------	----------	----------



CATEGORY	A	B	C	D
LPV DA	806/18		200 (200-1/2)	
LNNAV/VNAV DA	1012/40		406 (500-3/4)	
LNNAV MDA	1220/24	614 (700-1/2)	1220-13/8	614 (700-13/8)

HIRL all Rwys
REIL Rws 13L and 31L
TDZ/CL all Rws except 13L and 31L

SC-2, 23 JAN 2025 to 20 FEB 2025

SC-2, 23 JAN 2025 to 20 FEB 2025