

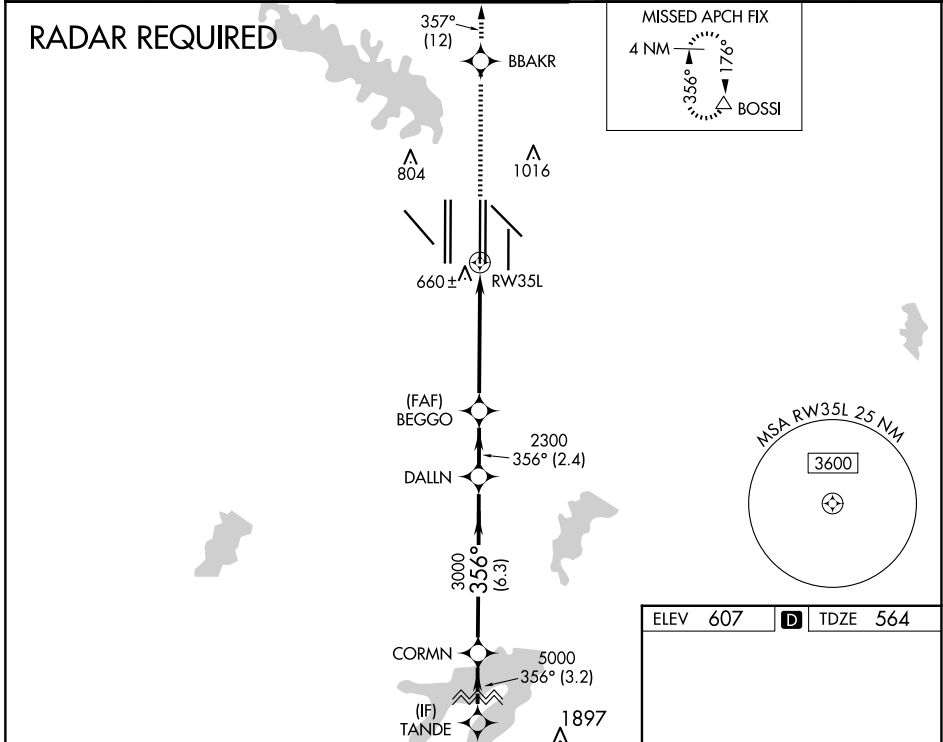
WAAS CH 45805 W35B	APP CRS 356°	Rwy Idg 13400 TDZE 564 Apt Elev 607
--	------------------------	--

RNAV (GPS) RWY 35L

DALLAS-FORT WORTH INTL (DFW)

<p>▽ For uncompensated Baro-VNAV systems, LNAV/VNAV NA below -4°C (25°F) or above 54°C (130°F). Simultaneous approach authorized with Rwy 36L/R and Rwy 35R. DME/DME RNP-0.3 NA. LNAV procedure NA during simultaneous operations. Use of FD or AP providing RNAV track guidance required during simultaneous operations.</p>		<p>MALSRL AS</p>	<p>MISSED APPROACH: Climb to 3000 direct BBAKR and on track 357° to BOSSI and hold.</p>		
D-ATIS ARR 123.775 DEP 135.925	LONE STAR APP CON 127.075	DFW TOWER 126.55 127.5 EAST 124.15 134.9 WEST	GND CON 121.65 121.8 EAST 121.85 WEST	CLNC DEL 128.25	CPDLC

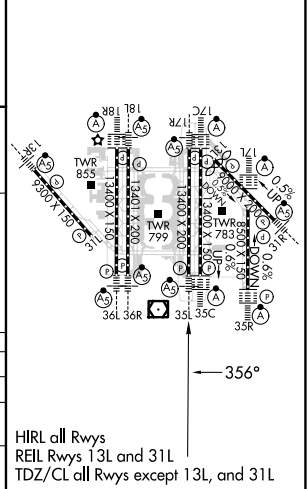
RADAR REQUIRED



ELEV 607	D TDZE 564
----------	-------------------

VGSI and RNAV glidepath not coincident (VGSI Angle 3.00/TCH 63).

TANDE	CORMN	DALLN	BEGGO	BBAKR	BOSSI
6000	5000	3000	2300	tr 357°	△
GP 3.00° TCH 47	*RNAV only.				
3.2 NM		6.3 NM	2.4 NM	4.1 NM	1.2
3000		2300		*1.2 NM to RWY35L	
CATEGORY	A	B	C	D	
LPV DA	764/18		200 (200-½)		
LNAV/VNAV DA	928/40		364 (400-¾)		
LNAV MDA	1020/24 456 (500-½)		1020/45 456 (500-¾)		



SC-2, 23 JAN 2025 to 20 FEB 2025

SC-2, 23 JAN 2025 to 20 FEB 2025