

APP CRS <b>315°</b>	Rwy Idg <b>9300</b>
	TDZE <b>581</b>
	Apt Elev <b>607</b>

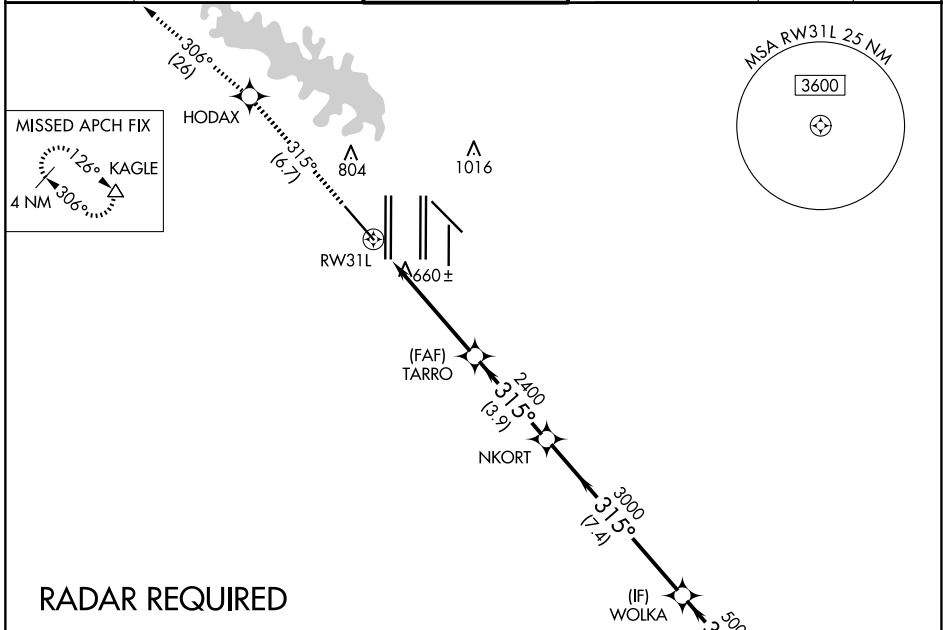
# RNAV (RNP) Z RWY 31L

DALLAS-FORT WORTH INTL (DFW)

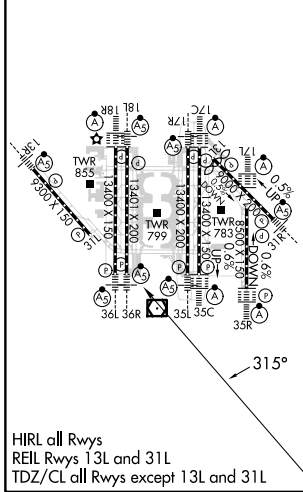
**▼** For uncompensated Baro-VNAV systems, procedure NA below -4°C (25°F) or above 54°C (130°F). Simultaneous approach authorized with Rwy 31R. GPS Required. Use of FD or AP providing RNAV track guidance required during simultaneous operations.

**MISSED APPROACH:** Climb to 3000 on track 315° to HODAX and on track 306° to KAGLE and hold.

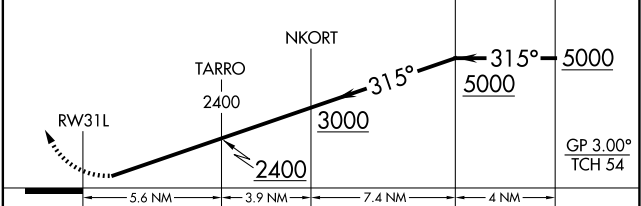
D-ATIS ARR <b>123.775</b> DEP <b>135.925</b>	LONE STAR APP CON <b>118.425 127.075 119.4</b>	DFW TOWER <b>126.55 127.5</b> EAST <b>124.15 134.9</b> WEST	GND CON <b>121.65 121.8</b> EAST <b>121.85</b> WEST	CLNC DEL <b>128.25</b>	CPDLC
--	---	---	---	---------------------------	-------



ELEV <b>607</b>	<b>D</b>	TDZE <b>581</b>
-----------------	----------	-----------------



3000	HODAX	KAGLE	VGSI and RNAV glidepath not coincident (VGSI Angle 3.13/TCH 72).
fr 315°	✧	tr 306°	△



CATEGORY	A	B	C	D
RNP 0.30 DA	951/60 370 (400-1¼)			

## AUTHORIZATION REQUIRED

SC-2, 23 JAN 2025 to 20 FEB 2025

SC-2, 23 JAN 2025 to 20 FEB 2025