

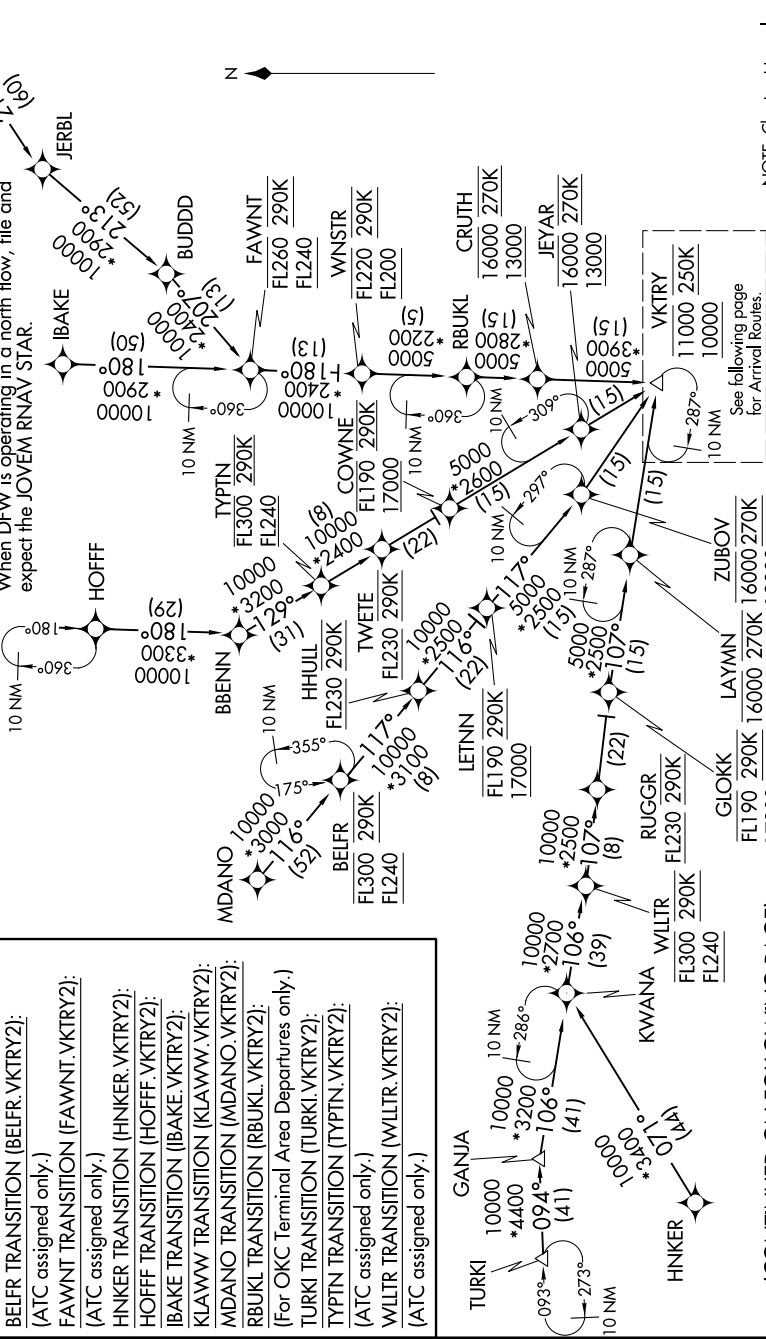
# VKTRY TWO ARRIVAL (RNAV) Transition Routes

SC-2, 23 JAN 2025 to 20 FEB 2025

IONE STAR APP CON  
119.875 284.65  
D-ATIS ARR  
123.775

- BELFR TRANSITION (BELFR.VKTRY2):  
(ATC assigned only.)
- FAWNT TRANSITION (FAWNT.VKTRY2):  
(ATC assigned only.)
- HNKER TRANSITION (HNKER.VKTRY2):  
(ATC assigned only.)
- HOFF TRANSITION (HOFF.VKTRY2):  
(ATC assigned only.)
- IBAKE TRANSITION (IBAKE.VKTRY2):  
(ATC assigned only.)
- KLAWW TRANSITION (KLAWW.VKTRY2):  
(ATC assigned only.)
- MDANO TRANSITION (MDANO.VKTRY2):  
(ATC assigned only.)
- RBUKL TRANSITION (RBUKL.VKTRY2):  
(ATC assigned only.)
- TURKI TRANSITION (TURKI.VKTRY2):  
(ATC assigned only.)
- TYPTN TRANSITION (TYPTN.VKTRY2):  
(ATC assigned only.)
- WLLTR TRANSITION (WLLTR.VKTRY2):  
(ATC assigned only.)

NOTE: RADAR Required.  
NOTE: RNAV 1.  
NOTE: DME/DME/IRU or GPS Required.  
NOTE: Turboprop aircraft only.  
NOTE: Aircraft should expect ILS or LOC Rwy 18R.  
NOTE: For use when DFW is operating in a south flow.  
NOTE: When DFW is operating in a north flow, file and expect the JOVEV RNAV STAR.



(CONTINUED ON FOLLOWING PAGE)

SC-2, 23 JAN 2025 to 20 FEB 2025