

NDB/DME YP <b>317</b>	APP CRS <b>074°</b>	Rwy ldg TDZE Apt Elev	<b>6000</b> <b>91</b> <b>91</b>
Chan <b>122 (117.5)</b>			

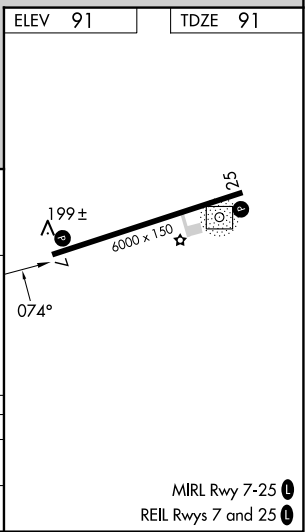
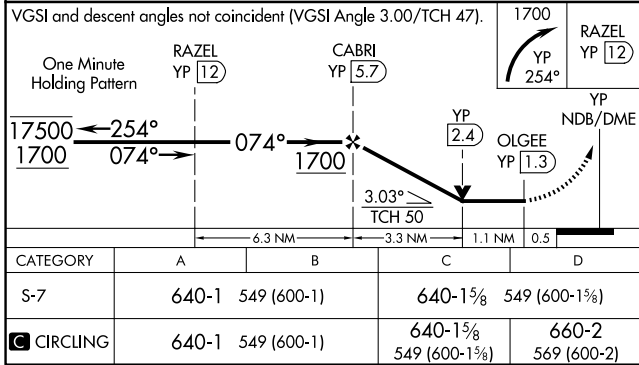
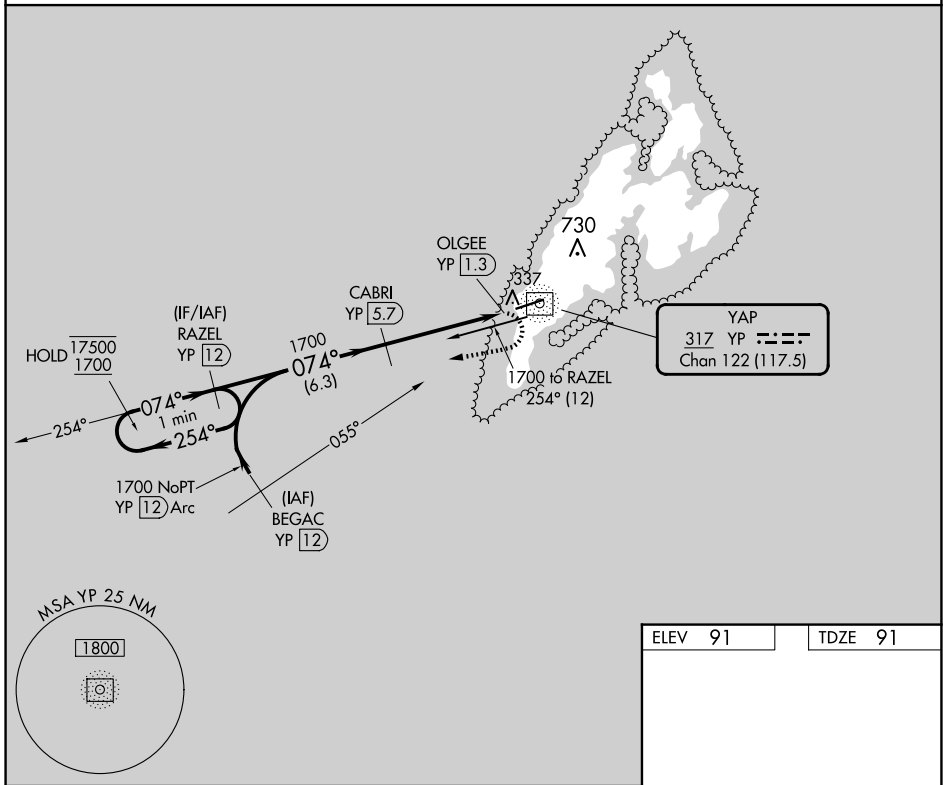
# NDB/DME RWY 7

YAP INTL (T11)(PTYA)

**▼** Circling NA north of Rwy 7-25.  
Rwy 7 helicopter visibility reduction below 3/4 SM NA.  
GPS required for procedure entry at BEGAC.  
No controlled airspace below 5500.

MISSED APPROACH: Climbing right turn to 1700 on 254° bearing from YP NDB/DME to RAZEL/12 DME and hold.

YAP RADIO  
**123.6** (CTAF)



PAC, 26 DEC 2024 to 20 FEB 2025

PAC, 26 DEC 2024 to 20 FEB 2025