

WAAS CH 40142 W29A	APP CRS 295°	Rwy Idg TDZE Apt Elev	7500 92 92
--	------------------------	-----------------------------	---------------------------------------

RNAV (GPS) RWY 29

KETCHIKAN INTL (KTN)(PAKT)

RNP APCH.

NA For inop ALS, increase all Cats visibility to 1¼ SM.

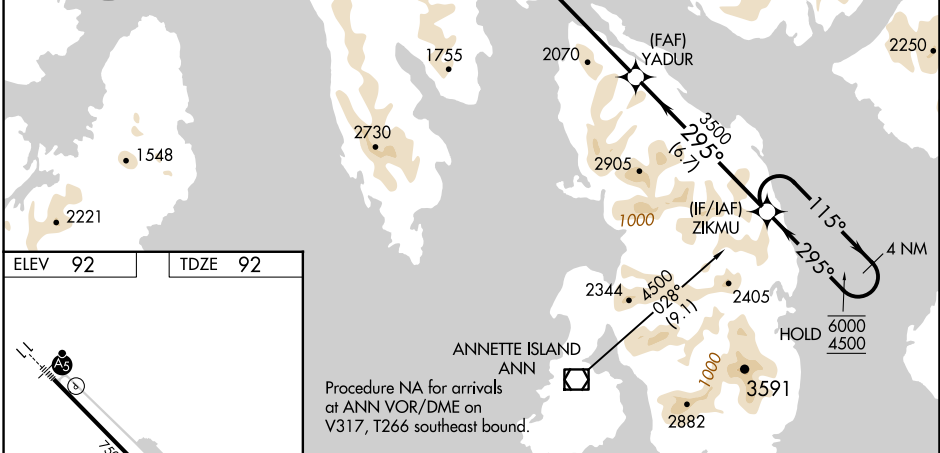
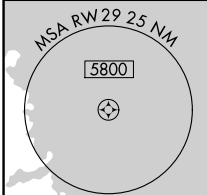
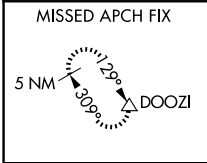


MISSED APPROACH: Climb to 5000 direct CLOYD and on track 296° to DOOZI and hold.
 *Missed approach requires minimum climb of 425 feet per NM to 2160; If unable to meet climb gradient, see RNAV (GPS)-B.

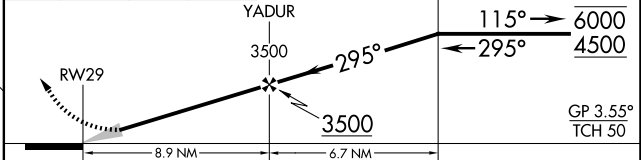
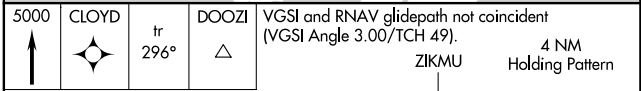
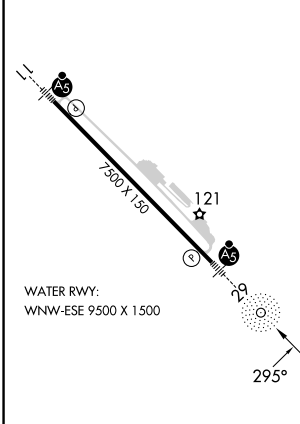
AFIS
134.45

ANCHORAGE CENTER
118.5 284.6

KETCHIKAN RADIO
123.6 (CTAF) 0



ELEV 92	TDZE 92
---------	---------



CATEGORY	A	B	C	D
LPV DA*	722-1¾		630 (700-1¾)	NA

AK, 26 DEC 2024 to 20 FEB 2025

AK, 26 DEC 2024 to 20 FEB 2025