

LOC/DME I-LVK <b>110.5</b> Chan <b>42</b>	APP CRS <b>255°</b>	Rwy ldg TDZE Apt Elev <b>5253</b> <b>400</b> <b>400</b>
-------------------------------------------------	------------------------	------------------------------------------------------------------------

# LOC RWY 25R

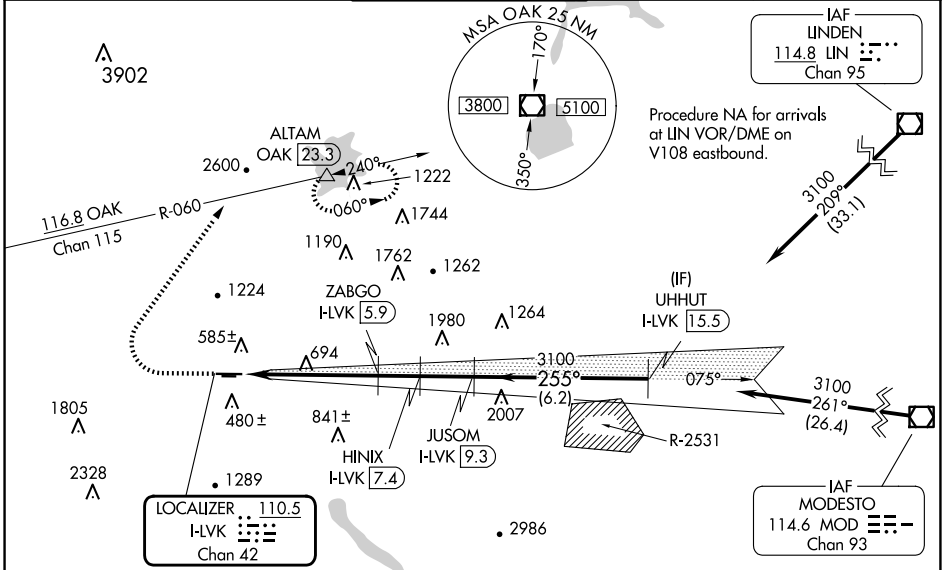
LIVERMORE MUNI (LVK)

**⚠** Circling to Rwy 25L NA at night.  
Inop table does not apply to S-25R Cats C/D.  
Circling NA north of Rwy 7L-25R.  
DME required.

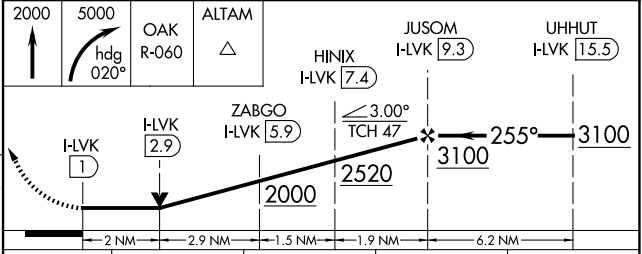
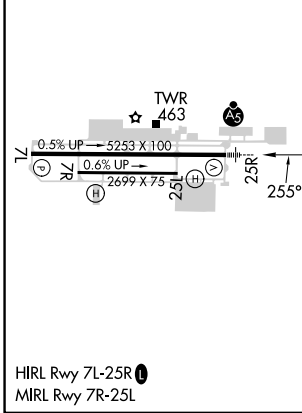
**MALS**  
⚠ **A5**

**MISSED APPROACH:** Climb to 2000 then climbing right turn to 5000 on heading 020° and OAK VOR/DME R-060 to ALTAM/OAK VOR/DME 23.3 DME and hold, continue climb-in-hold to 5000.  
\*Missed approach requires minimum climb of 235 feet per NM to 3600.

ATIS <b>119.65</b>	NORCAL APP CON <b>123.85 278.3</b>	<b>LIVERMORE TOWER *</b> <b>118.1(CTAF) 239.25</b>	GND CON <b>121.6</b>	UNICOM <b>122.95</b>
-----------------------	---------------------------------------	-------------------------------------------------------	-------------------------	-------------------------



ELEV 400	TDZE 400
----------	----------



CATEGORY	A	B	C	D
S-LOC 25R*	1080-1/2	680 (700-1/2)	1080-1/2	680 (700-1/2)
S-LOC 25R	2000-3/4 1600 (1600-3/4)	2000-1 1600 (1600-1)	2000-3	1600 (1600-3)
<b>C</b> CIRCLING	2000-1 1/4 1600 (1600-1 1/4)	2000-1 1/2 1600 (1600-1 1/2)	2000-3	1600 (1600-3)

SW-2, 23 JAN 2025 to 20 FEB 2025

SW-2, 23 JAN 2025 to 20 FEB 2025