

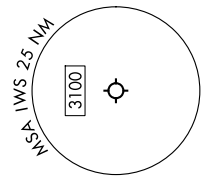
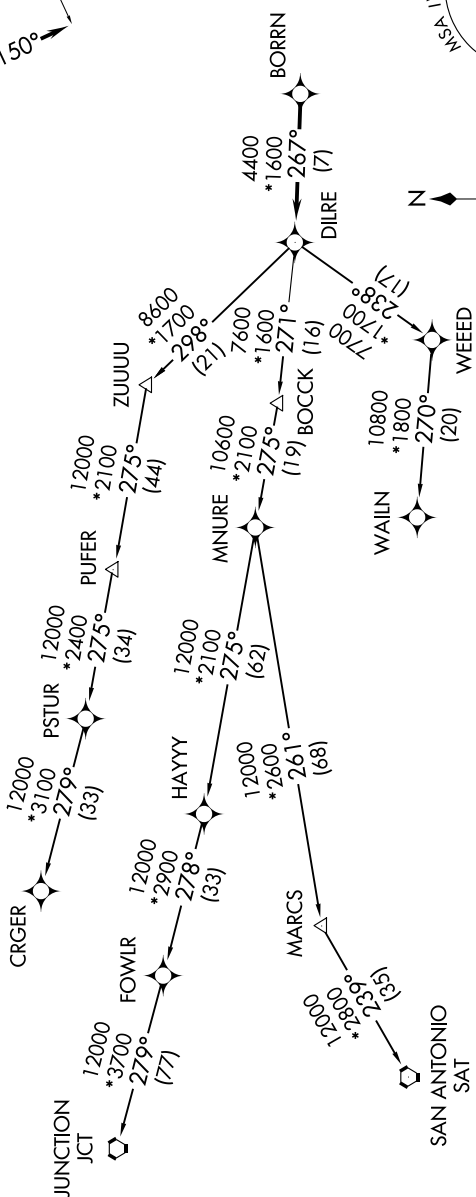
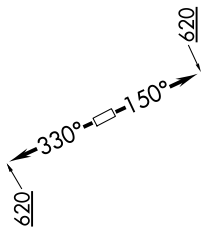
BORRN SIX DEPARTURE (RNAV)

SC-5, 23 JAN 2025 to 20 FEB 2025

CTAF  
123.05  
CLNC DEL  
121.15  
HOUSTON DEP CON  
123.8 257.7

RNAV 1 - DME/DME/IRU or GPS.  
RADAR required.

TAKEOFF MINIMUMS  
Rwy 15, 33: Standard with minimum  
climb of 500'/NM to 620.



NOTE: Chart not to scale.

NOTE: CRGR-TRANSITION ATC assigned only  
for aircraft departing 54T, AXH, EFD, GLS,  
HPY, IWS, LBX, LVJ, SGR, TME, T00, T41.

(NARRATIVE ON FOLLOWING PAGE)

BORRN SIX DEPARTURE (RNAV)

SC-5, 23 JAN 2025 to 20 FEB 2025