

CLNC DEL
121.15
CTAF
123.05
HOUSTON DEP CON
123.8 257.7

CEDAR CREEK
114.8 CQY
Chan 95

LEONA
110.8 LOA
Chan 45

DAISETTA
116.9 DAS
Chan 116

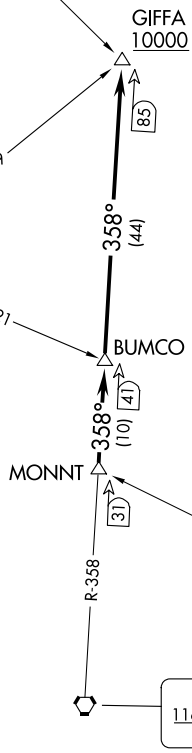
HUMBLE
116.6 IAH
Chan 113

**TOP ALTITUDE:
ASSIGNED BY ATC**

NOTE: RADAR required.
NOTE: For aircraft destined for the DFW
terminal area only.

TAKEOFF MINIMUMS
Rwys 15, 33: Standard

NOTE: Chart not to scale.



SC-5, 23 JAN 2025 to 20 FEB 2025

SC-5, 23 JAN 2025 to 20 FEB 2025

DEPARTURE ROUTE DESCRIPTION

TAKEOFF ALL RUNWAYS: When entering controlled airspace, climb on assigned heading for RADAR vectors to MONNT INT. Maintain ATC assigned altitude. Expect filed altitude 10 minutes after departure, thence. . . .
. . . . on IAH R-358 to cross GIFFA INT at or above 10000.