

WAAS CH <b>40107</b> <b>W17A</b>	APP CRS <b>163°</b>	Rwy Idg <b>4200</b> TDZE <b>1047</b> Apt Elev <b>1047</b>
--	------------------------	---

# RNAV (GPS) RWY 17

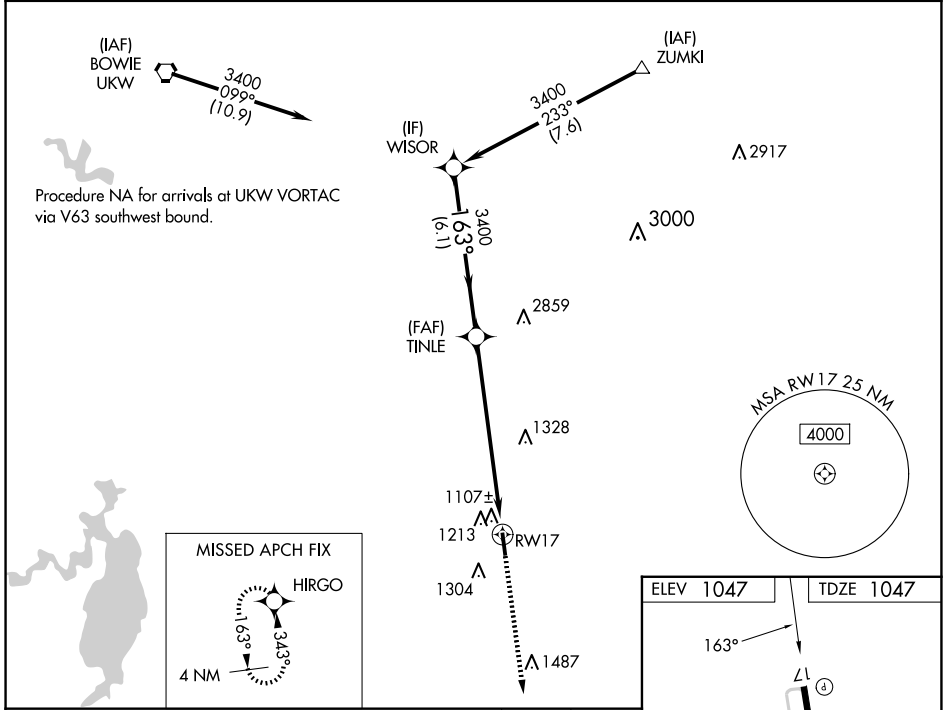
DECATUR MUNI (LUD)

**RNP APCH.**

⚠ When local altimeter setting not received, use Fort Worth Meacham Intl altimeter setting and increase all DAs 113 feet, and all MDAs 120 feet, increase LPV visibilities ¼ mile, LNAV/VNAV visibilities ½ mile, and circling Cat B visibility ¼ mile. Baro-VNAV and VDP NA when using Fort Worth Meacham Intl altimeter setting. For uncompensated Baro-VNAV systems, LNAV/VNAV NA below -17°C (2°F) or above 54°C (130°F).

**MISSED APPROACH:** Climb to 2600 direct HIRGO and hold.

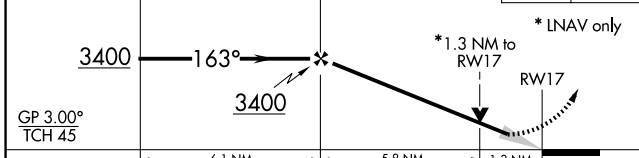
AWOS-3 <b>118.225</b>	LONE STAR APP CON <b>118.1 306.95</b>	UNICOM <b>122.8(CTAF) 0</b>
--------------------------	--	--------------------------------



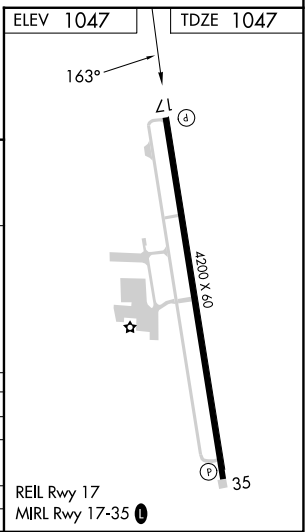
Procedure Turn NA

VGSI and RNAV glidepath not coincident (VGSI Angle 3.50/TCH 23).

2600 HIRGO



CATEGORY	A	B	C	D
LPV DA	1297-1	250 (300-1)		NA
LNAV/VNAV DA	1459-1½	412 (500-1½)		NA
LNAV MDA	1560-1	513 (600-1)		NA
<b>CIRCLING</b>	1680-1	633 (700-1)		NA



SC-2, 23 JAN 2025 to 20 FEB 2025

SC-2, 23 JAN 2025 to 20 FEB 2025