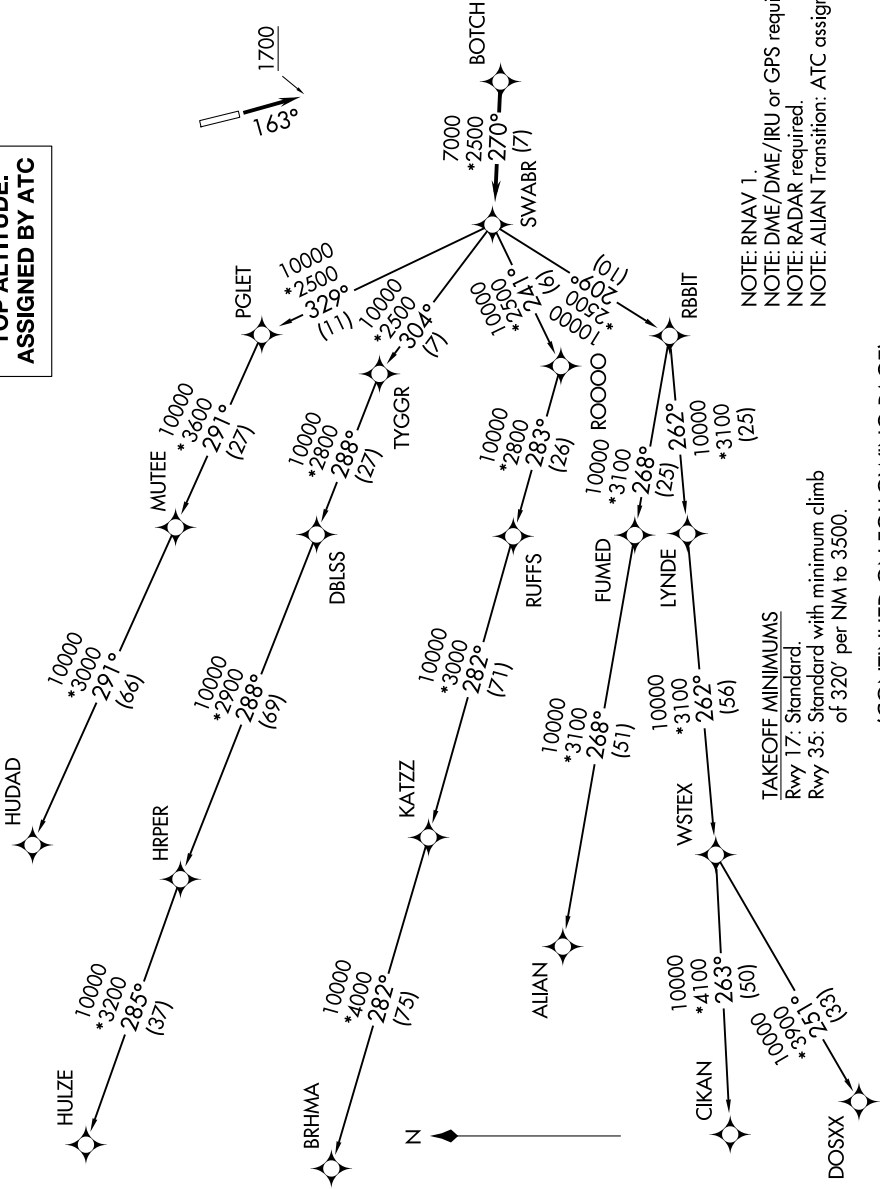


# SWABR ONE DEPARTURE (RNAV)

LONE STAR DEP CON  
118.1 306.95  
CTAF  
122.8

## TOP ALTITUDE: ASSIGNED BY ATC



NOTE: RNAV 1.  
 NOTE: DME/DME/IRU or GPS required.  
 NOTE: RADAR required.  
 NOTE: ALIAN Transition: ATC assigned only.

**TAKEOFF MINIMUMS**  
 Rwy 17: Standard.  
 Rwy 35: Standard with minimum climb  
 of 320' per NM to 3500.

NOTE: Chart not to scale.

(CONTINUED ON FOLLOWING PAGE)