

VOR/DME CNG 113.1 Chan 78	APP CRS 137°	Rwy Idg TDZE Apt Elev	N/A N/A 522
---	------------------------	-----------------------------	--

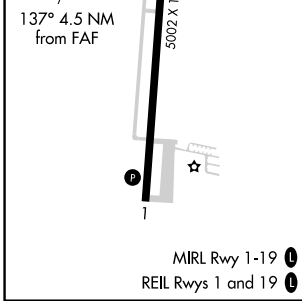
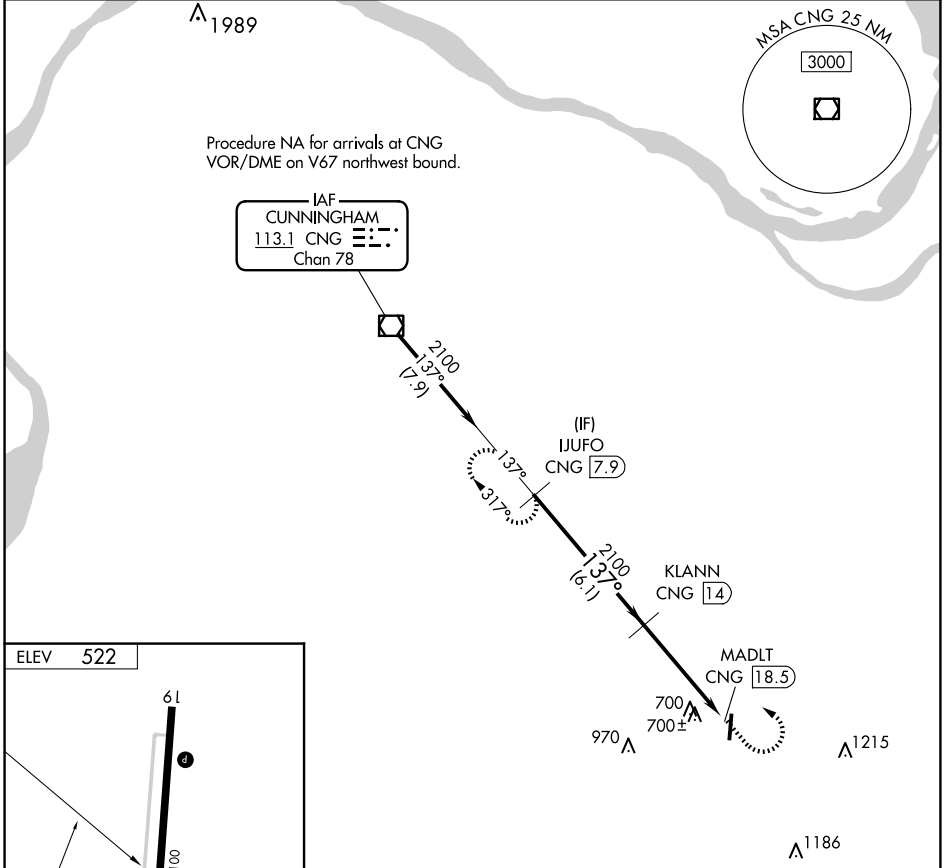
VOR/DME-A

MAYFIELD GRAVES COUNTY (M25)

NA Circling Rwy 1 NA at night. When local altimeter setting not received, use Paducah altimeter setting: increase all MDAs 80 feet and visibility Cats C and D ¼ SM.

MISSED APPROACH: Climb to 1200 then climbing left turn to 2300 on CNG VOR/DME R-137 to IJUFO 7.9 DME and hold.

AWOS-3 120.625	MEMPHIS CENTER 133.65 292.15	UNICOM 122.8 (CTAF)
--------------------------	--	-------------------------------



	IJUFO CNG 7.9	KLANN CNG 14	1200	2300	IJUFO CNG 7.9
	2100	2100	↑	↘	CNG R-137
	6.1 NM		4.5 NM		
CATEGORY	A	B	C	D	
CIRCLING	1060-1	538 (600-1)	1060-1½ 538 (600-1½)	1280-2½ 758 (800-2½)	

SE-1, 23 JAN 2025 to 20 FEB 2025

SE-1, 23 JAN 2025 to 20 FEB 2025