

APP CRS	Rwy Idg	5101
297°	TDZE	4148
	Apt Elev	4148

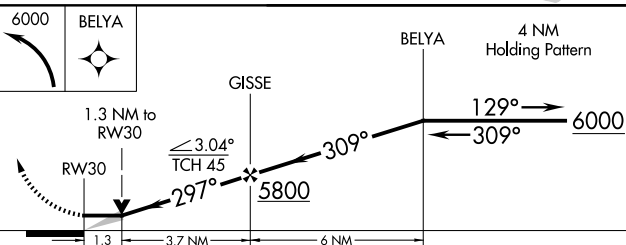
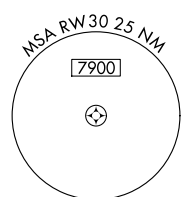
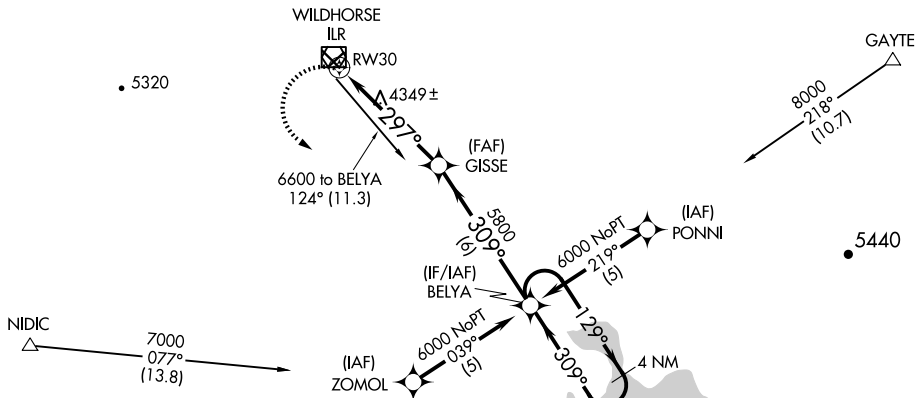
RNAV (GPS) RWY 30

BURNS MUNI (BNO)

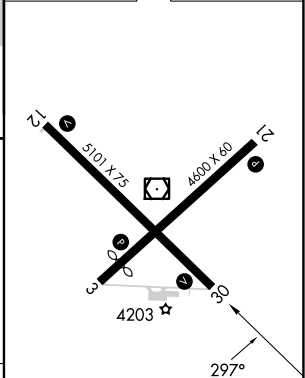
RNP APCH - GPS.		MISSED APPROACH: Climbing left turn to 6000 direct BELYA and hold.
-----------------	--	--------------------------------------------------------------------

ASOS 135.575	SALT LAKE CENTER 128.05 306.95	UNICOM 122.8 (CTAF)
------------------------	------------------------------------------	-------------------------------

Procedure NA for arrivals on ILR VOR/DME airway radial 123.



ELEV 4148	TDZE 4148
-----------	-----------



CATEGORY	A	B	C	D
LNVA MDA	4600-1	452 (500-1)	4600-1 $\frac{3}{8}$	452 (500-1 $\frac{1}{8}$)
CIRCLING	4680-1 532 (600-1)	4720-1 572 (600-1)	4740-1 $\frac{1}{2}$ 592 (600-1 $\frac{1}{2}$)	5000-2 $\frac{3}{4}$ 852 (900-2 $\frac{3}{4}$)

REIL Rwy 3, 12, 21 and 30
MIRL Rwy 3-21 and 12-30

NW-1, 23 JAN 2025 to 20 FEB 2025

NW-1, 23 JAN 2025 to 20 FEB 2025