

APP CRS	Rwy Idg	3500
084°	TDZE	162
	Apt Elev	162

RNAV (GPS) RWY 9

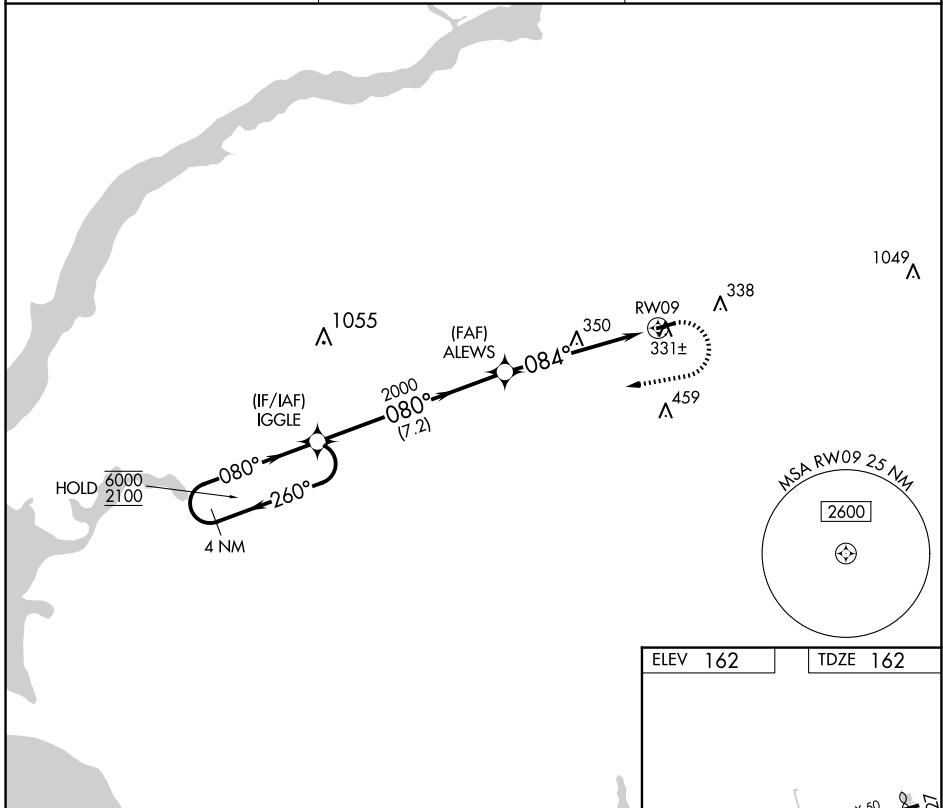
CROSS KEYS (17N)

RNP APCH - GPS.

▼ Procedure NA at night. Rwy 9 helicopter visibility reduction below 1 SM NA.
▲ NA Use Philadelphia Intl altimeter setting.

MISSED APPROACH: Climbing right turn to 2100 direct IGGLE and hold.

PHL ASOS 133.4	PHILADELPHIA APP CON 127.35 133.875 317.55	UNICOM 122.8 (CTAF) 1
--------------------------	--	---------------------------------



NE-2, 23 JAN 2025 to 20 FEB 2025

NE-2, 23 JAN 2025 to 20 FEB 2025

ELEV 162	TDZE 162
----------	----------

CATEGORY	A	B	C	D
LNVA MDA	760-1	598 (600-1)	NA	
CIRCLING	760-1 598 (600-1)	820-1 658 (700-1)	NA	

LIRL Rwy 9-27 1