

GORDON, NEBRASKA

AL-6370 (FAA)

22195

NDB GRN <b>414</b>	APP CRS <b>216°</b>	Rwy Idg TDZE Apt Elev	<b>5196</b> <b>3562</b> <b>3562</b>
-----------------------	------------------------	-----------------------------	---

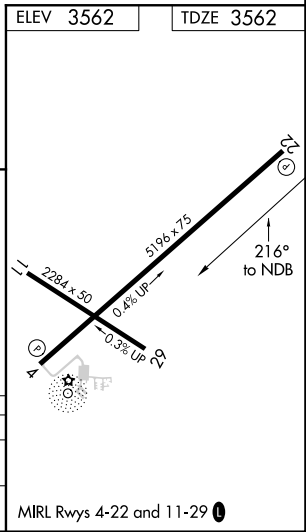
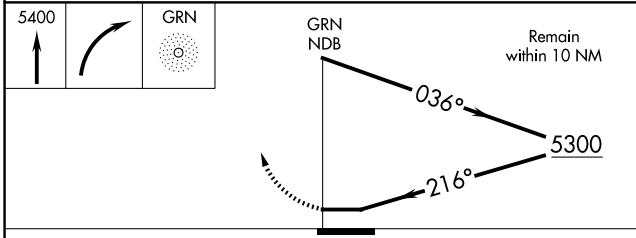
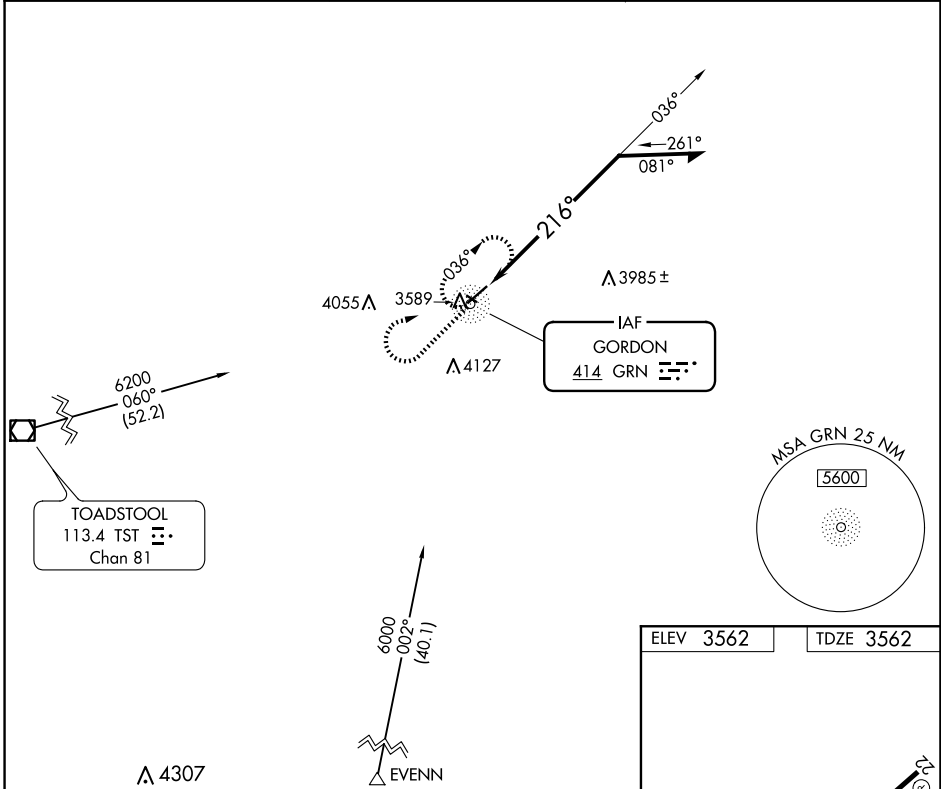
# NDB RWY 22

GORDON MUNI (GRN)

**⚠** Rwy 22 Helicopters visibility reduction below  $\frac{3}{4}$  SM NA.  
**⚠** Circling Rwy 11, 29 NA at night.

MISSED APPROACH: Climb to 5400 then right turn direct GRN NDB and hold.

AWOS-3PT <b>118.2</b>	DENVER CENTER <b>127.95 338.2</b>	UNICOM <b>122.8 (CTAF) ①</b>
--------------------------	--------------------------------------	---------------------------------



CATEGORY	A	B	C	D
S-22	4420-1 858 (900-1)	4420-1¼ 858 (900-1¼)	NA	
CIRCLING	4420-1¼ 858 (900-1¼)		NA	

GORDON, NEBRASKA  
 Amdt 4C 19JUL18

42°48'N-102°11'W

# GORDON MUNI (GRN) NDB RWY 22

NC-2, 23 JAN 2025 to 20 FEB 2025

NC-2, 23 JAN 2025 to 20 FEB 2025