

WAAS CH 61216 W20A	APP CRS 200°	Rwy Idg 6100 TDZE 3786 Apt Elev 3788
--	------------------------	---

RNAV (GPS) RWY 20

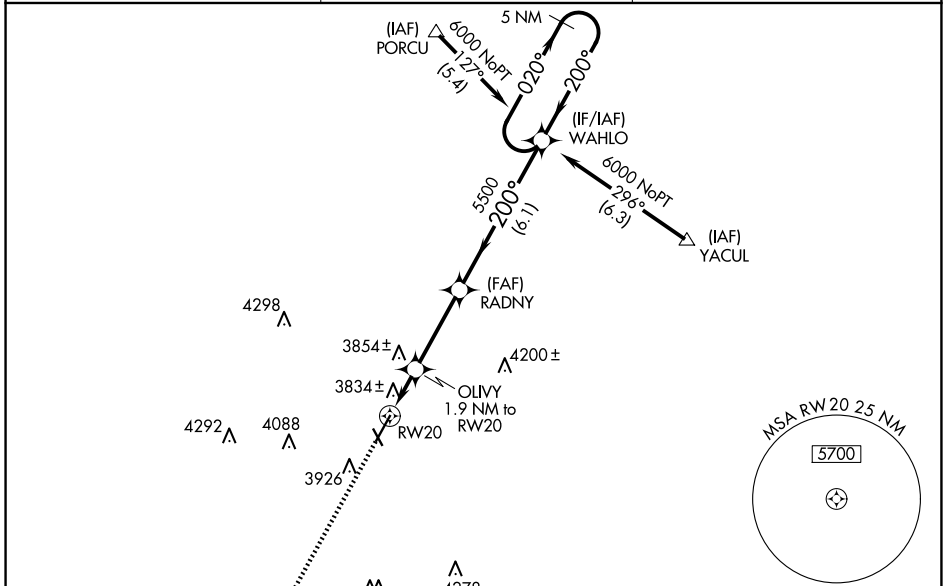
HEREFORD MUNI (HR.X)

RNP APCH - GPS.

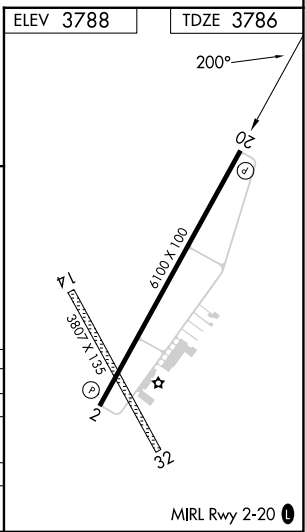
⚠ For uncompensated Baro-VNAV systems, LNAV/VNAV NA below -22°C or above 41°C. When local altimeter setting not received, use AMA altimeter setting: increase LPV DA to 4098 feet and all visibilities ¼ SM; increase LNAV/VNAV DA to 4232 feet and all visibilities ¼ SM; increase all MDAs 120 feet and LNAV visibility Cats C and D ½ SM, increase Circling visibility Cat C ½ SM and Cat D ¼ SM. Circling NA to Rwy 14 and 32. Baro-VNAV and VDP NA when using AMA altimeter setting.

MISSED APPROACH:
Climb to 6000 direct
LEMG and hold.

AWOS-3 118.05	AMARILLO APP CON ★ 119.5 307.0	UNICOM 122.8 (CTAF) ①
-------------------------	--	---------------------------------



ELEV 3788		TDZE 3786	
LEMG		5 NM Holding Pattern	
6000	LEMG	5500	6000
1.2 NM to RW20		1.9 NM to RW20	5.0 NM to RW20
4420	4420	5500	6000
1.2 NM	0.7 NM	3.3 NM	6.1 NM
CATEGORY	A	B	C
LPV DA	3986-¾ 200 (200-¾)		
LNAV/VNAV DA	4120-1¼ 334 (400-1¼)		
LNAV MDA	4220-1	434 (500-1)	4220-1¼ 434 (500-1¼)
CIRCLING	4280-1	492 (500-1)	4440-1¾ 4620-2¾ (700-1¾) (900-2¾)



SC-2, 23 JAN 2025 to 20 FEB 2025

SC-2, 23 JAN 2025 to 20 FEB 2025