

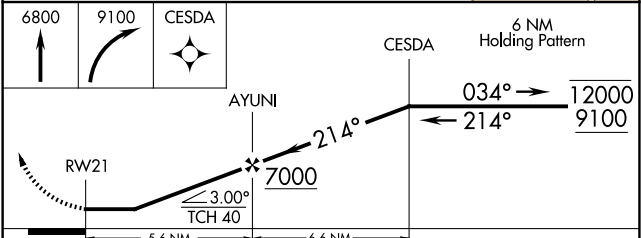
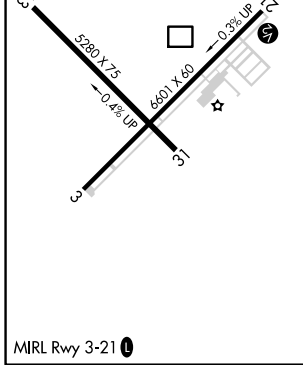
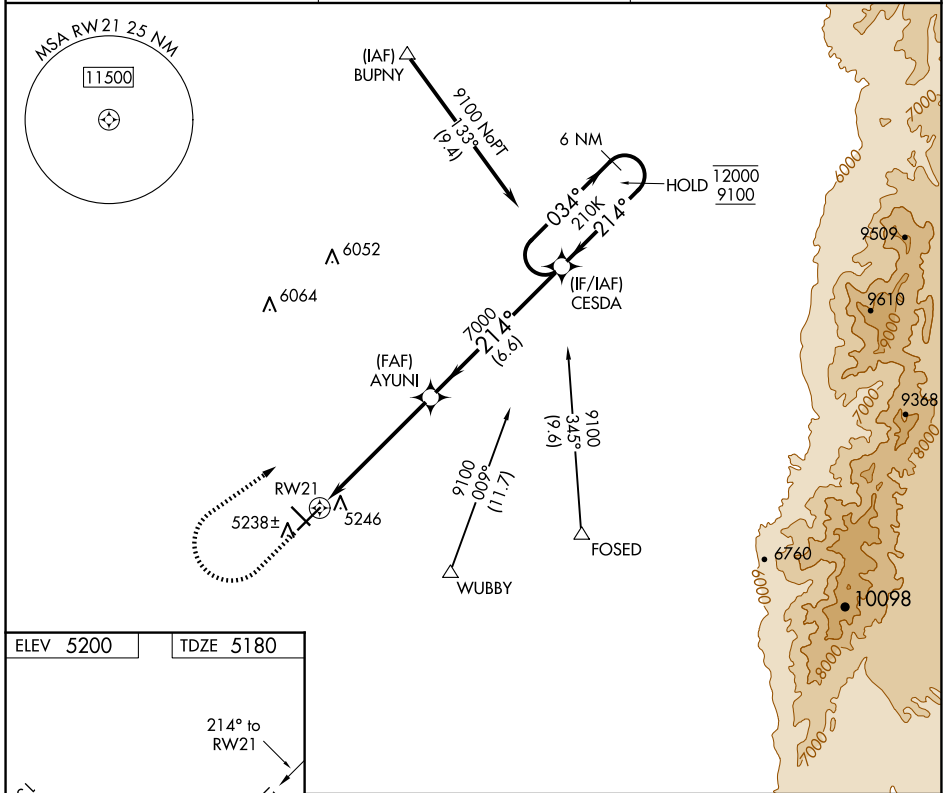
APP CRS 214°	Rwy Idg 6601
	TDZE 5180
	Apt Elev 5200

RNAV (GPS) RWY 21

BELEN RGNL (BRG)

RNP APCH ▼ Procedure NA at night. Rwy 21 helicopter visibility reduction below 1 SM NA.	MISSED APPROACH: Climb to 6800 then climbing right turn to 9100 direct CESDA and hold.
---	--

AWOS-3PT 118.55	ALBUQUERQUE APP CON 123.9 354.1	UNICOM 122.8 (CTAF) 0
---------------------------	---	---------------------------------



CATEGORY	A	B	C	D
RNAV MDA	5560-1 380 (400-1)			NA
<input checked="" type="checkbox"/> CIRCLING	5600-1 400 (400-1)	5660-1 460 (500-1)	5660-1½ 460 (500-1½)	NA

SW-1, 23 JAN 2025 to 20 FEB 2025

SW-1, 23 JAN 2025 to 20 FEB 2025